

Eaton Corporation
 Truck Components Operations – North America
 P.O. Box 4013
 Kalamazoo, MI 49003



Topic:

16120 Model Replaced by 16130 Series

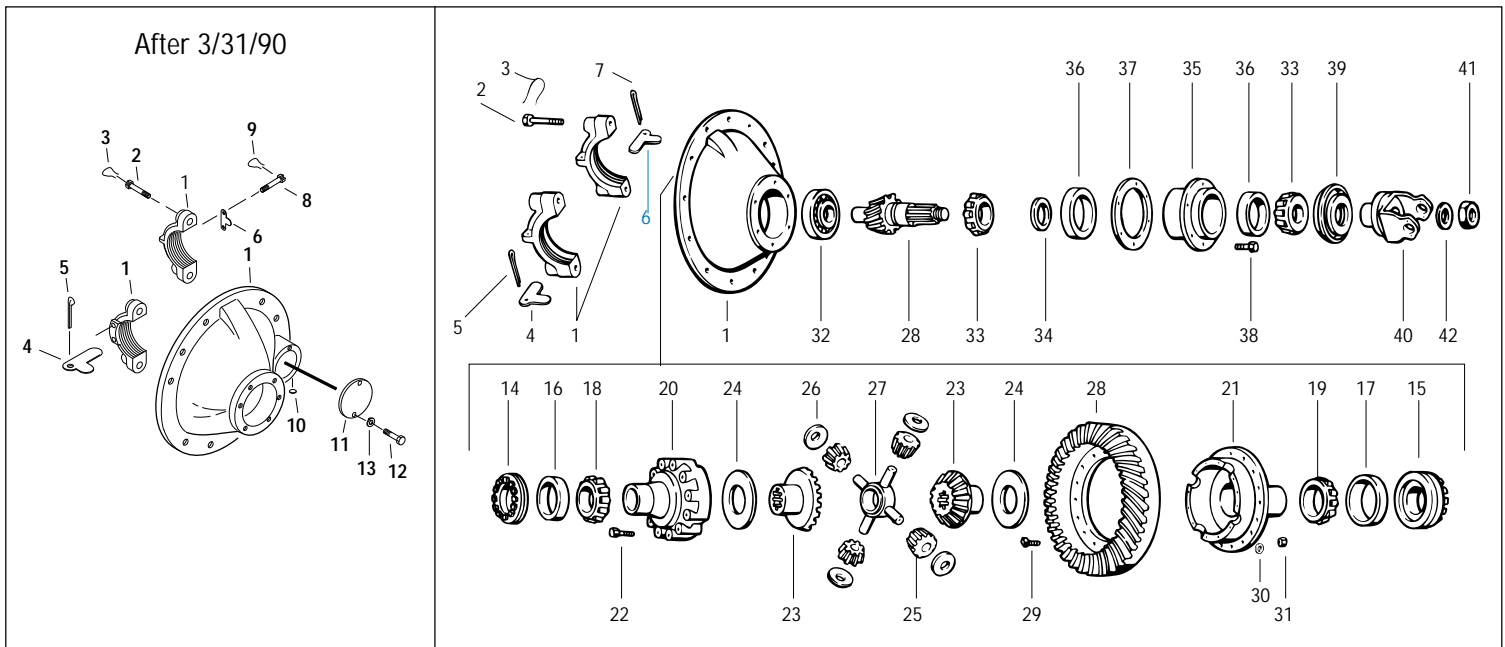
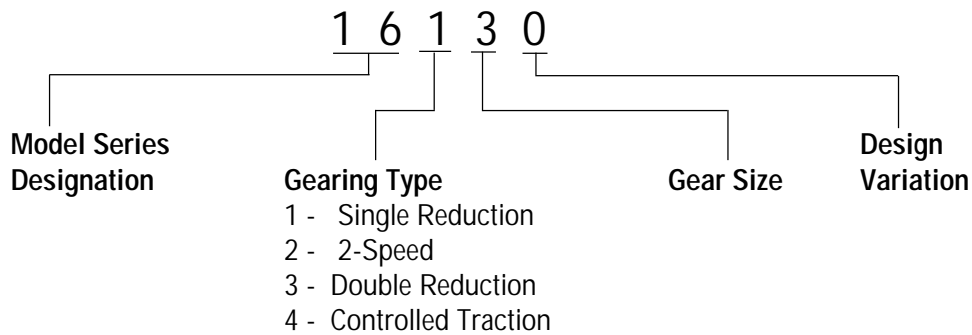
Bulletin Type:

- Service Procedures
- Parts Information
- Warranty Info.

Product Line:

- Axle
- Brake
- Clutch
- Transmission
- AfterMarket
- Speciality

Effective as of October 1995, the Eaton 16120 model was replaced by the 16130 series. Some of the modifications include ring gear pinions that have 34 involute splines with metric threads, and an upgraded wheel differential assembly. This bulletin listing the components for the 16130 and 16120 series axles replaces bulletin number 91-05, dated June 1991.



Item	Part Name	Qty	16120 Before 3/31/90	16120 After 3/31/90	16130
	DIFFERENTIAL CARRIER & BEARING CAP KIT "Includes Items 1-15, 43"	1	76426 (NLA) (Note 1)	213446	213446
1	Diff Carrier & Cap - NSS	1	76425 - NSS	113699 - NSS	113699 - NSS
2	Bearing Capscrew	4	14970	—	—
		2	—	14970	14970
		2	—	127181	127181
3	Lockwire	4	12563	—	—
		2	—	90536	90536
4	Brg Cap Adjuster Lock (LH)	1	90168	13377	13377
5	Cotter Pin (LH)	1	90873	90873	90873
6	Brg Cap Adjuster Lock (RH)	1	14275	46773	46773
7	Cotter Pin (LH)	1	90876	—	—
8	Capscrew (LH)	2	—	126076	126076
9	Lockwire	1	—	90533	90533
10	Expansion Plugs	2	—	9797	9797
11	Shift Fork Opening Cover	1	—	45521	45521
12	Stud / Screw	2	—	20807	20807
13	Lockwasher	2	—	90415	90415
14	Diff Bearing Adjuster (RH)	1	33682	110243	110243
15	Diff Bearing Adjuster (LH)	1	31562	118776	118776
	BEARING KIT Includes Items 16-19, 32,33,36,39,43	1	99040	99050	(Note 2)
16	Diff Bearing Cup (RH) Plain	1	90951	9803	9803
17	Diff Bearing Cup (LH) Flange	1	90943	15092	15092
18	Diff Bearing Cone (RH) Plain	1	40679	15094	27813
19	Diff Bearing Cone (LH) Flange	1	6082	27876	27876
	WHEEL DIFF CASE KIT Includes Items 20-22	1	68021	211570	119604
20	Diff Case (Plain half) - NSS	1	118735	207234	118774
21	Diff Case (Flange Half) - NSS	1	118736	207233	118775
22	Diff Case Capscrew	12	—	—	96271
	Long	8	118740	96283	—
	Short	4	118741	118741	—
	WHEEL DIFF SIDE GEAR KIT - - (Note 5) Includes Items 23-27 (36 Inv only)	1	114242	114242	119601
23	Diff Side Gear - 36 Inv	2	110524	110524	118777
	Diff Side Gear - 30 Inv	2	102499	102499	—
24	Side Gear Thrust Washer	2	18346	18346	27827
25	Side Pinion	4	102500	102500	104139
26	Side Pinion Thrust Washer - (Note 3)	4	129301	129301	27810
27	Spider	1	25971	25971	38289
28	Ring Gear & Drive Pinion Set	1	VARIES - SEE GEAR/PINION CHART		
	RING GEAR NUT & BOLT KIT Includes Items 29-31	1	67686	67686	219512
29	Bolts	16	119900	119900	128046
30	Nuts	16	67592	67592	75184
31	Washers	16	—	—	119934
32	Pinion Pilot Bearing - (Note 4)	1	129175	129175	129175

NSS = Not Sold Separately

Item	Part Name	Qty	16120 Before 3/31/90	16120 After 3/31/90	16130
33	Pinion Bearing Cone	2	49848	33699	33699
34	Pinion Bearing Spacer	1	VARIES - SEE SPACER CHART		
35	Pinion Bearing Cage/Cup Assy Includes Items 36	1	75967	75108	75108
36	Pinion Bearing Cup	2	49849	12495	12495
37	Pinion Bearing Cage Shims	AR	75968	107567	107567
38	Bearing Cage Capscrew	6	113325	113325	113325
39	Oil seal - 2 5/8" I.D. Seal	1	935735	119427	119427
	For 2 3/8" I.D. Seal (included in Brg Kit)	1	81674	—	—
40	Input Yoke	1	VARIES - SEE YOKE CHART		
41	Pinion Nut - English Threads	1	95204	95204	—
	Pinion Nut - Metric Threads	1	—	—	210133
42	Flat Washer	1	14354	14354	210114
43	Gasket Compound - RTV	1	107276	107276	107276

Note 1: Part number 76426 is NLA, you must order new carrier, call your OEM.

Note 2: There is no Bearing kit part number established yet, use the 99050 kit but order item #18 p/n 27813 instead of 15094.

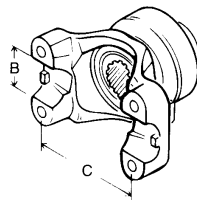
Note 3: Original 64467 washer now replaced by 129301 washer.

Note 4: Original 15828 pinion pilot bearing is now replaced by part number 129175.

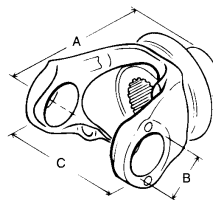
Note 5: For models with No-Spin wheel differentials. Complete No-Spin p/n: 110828 - (36 Inv Spline), 91878 - (30 Inv Spline).

YOKE CHART

STYLE X
Half Round

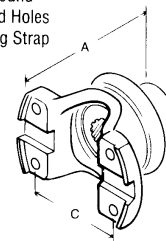


STYLE Y
Full Round



STYLE Z

Half Round
Tapped Holes
Bearing Strap



Pinion Spline: 34 Involute 1.75"

YOKE SERIES	JOINT ANGLE	STYLE	YOKE & SLINGER
1410	30	X	126425
1480	25	X	126427
1480	25	X	126533
1550	25	X	126429
1550	37	X	126555
1610	35	Y	126469
1610	30	X	126531
1710	34	X	126535
6C	—	Z	128594

RING GEAR & PINION SETS

PINION SPLINE: 10 Straight 1.75"

16120 STANDARD SPIRAL GEAR SETS				
RATIO	TOOTH COMBO	SERVICE GEAR SET P/N	15" GEAR (NSS)	ENGLISH THREADS PINION (NSS)
4.62	37/8	98124*	50186	50187
4.88	39/8	98125*	50188	50189
5.57	39/7	98126*	50190	50191
6.14	43/7	98127*	50192	50193
6.50	39/6	98128*	50194	48430
7.17	43/6	98129*	50196	50197
7.60	38/5	98130*	48701	48702

* OBSOLETE - REPLACE WITH 16130 GEAR SET & NEW YOKE ASSY

16120 RH SPIRAL GEAR SETS				
TOOTH RATIO	GEAR SET COMBO	SERVICE 15" P/N	GEAR (NSS)	ENGLISH THREADS PINION(NSS)
4.62	37/8	98773*	50174	79267
4.88	39/8	98774*	50176	84383
5.57	39/7	99686**	50178	99684
6.14	43/7	98775*	50180	79689
6.50	39/6	98776*	50182	93661
7.17	43/6	98777**	50184	90986
7.60		N/A	N/A	N/A

** OBSOLETE - NO REPLACEMENT

PINION SPLINE: 34 Involute 1.75"

16130 STANDARD SPIRAL GEAR SETS				
RATIO	TOOTH COMBO	SERVICE GEAR SET P/N	15" GEAR (NSS)	METRIC THREADS PINION (NSS)
4.62	37/8	218832	50186	129241
4.88	39/8	218833	50188	129242
5.57	39/7	218834	50190	129243
6.14	43/7	218835	50192	129244
6.50	39/6	218836	50194	129245
7.17	43/6	218837	50196	129246
7.60	38/5	218838	48701	129247

16130 RH SPIRAL GEAR SETS				
RATIO	TOOTH COMBO	SERVICE GEAR SET P/N	15" GEAR (NSS)	METRIC THREADS PINION (NSS)
4.62	37/8	218839	50174	129248
4.88	39/8	218840	50176	129249
5.57		N/A	N/A	N/A
6.14	43/7	218841	50180	129250
6.50	39/6	218842	50182	129251
7.17		N/A	N/A	N/A
7.60		N/A	N/A	N/A

PINION BEARING SPACERS

16120 MODEL			
.514	91617	.526	91633
.515	91618	.527	91637
.516	91619	.528	91641
.517	91620	.529	91645
.518	91621	.530	91649
.519	91622	.531	91653
.520	91623	.532	91657
.521	91624	.533	91661
.522	91625	.534	91665
.523	91627	.535	91667
.524	91629	.536	91669
.525	91631	.537	91671

16130 MODEL	
.634	91511
.635	91513
.636	91515
.637	91519
.638	91523
.639	91527
.640	91531
.641	91535
.643	91539
.644	91541
.645	91542
.646	91543

Carrier Exchange Listing

Call 1-800-TCM-HELP (826-4357)
for part number availability.

**Technology
you can depend on**

Copyright Eaton Corporation, 2001. EATON CORPORATION hereby grants its customers, vendors, or distributors permission to freely copy, reproduce and/or distribute this document in printed format. THIS INFORMATION IS NOT INTENDED FOR SALE OR RE-SALE, AND THIS NOTICE MUST REMAIN ON ALL COPIES.

