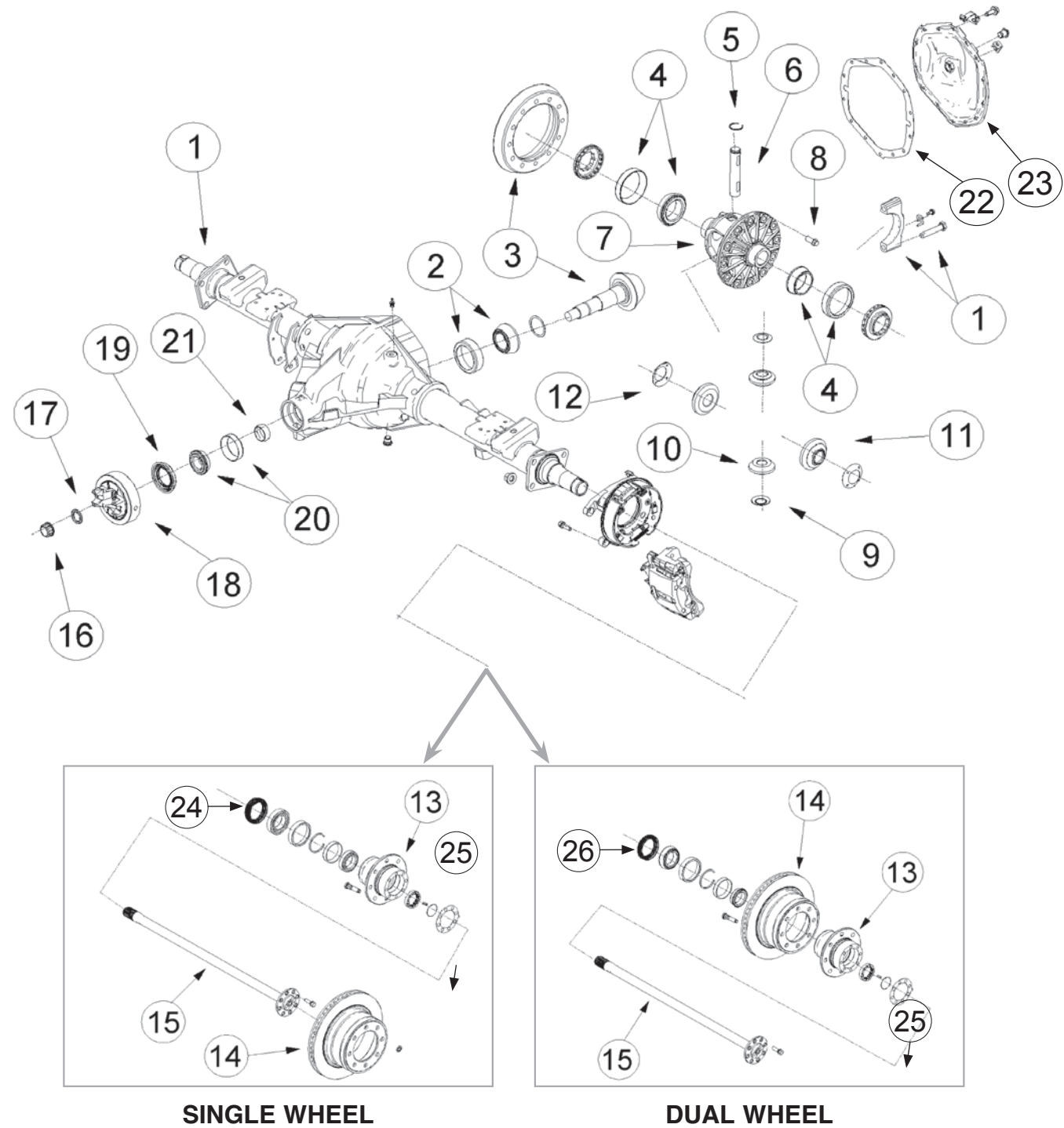




GM 11.5" REAR AXLE



VEHICLE REFERENCE GUIDE

C	TRUCK - 2 WHEEL DRIVE FULL-SIZE TRUCK & UTILITY
K	TRUCK - 4 WHEEL DRIVE FULL-SIZE TRUCK & UTILITY
G	FULL-SIZE VAN (ALSO GMT-600), EXPRESS/SAVANA
WCC	WORKHORSE CUSTOM CHASSIS

ILL #	AAM PART NUMBER	OE PART NUMBER	DESCRIPTION	REQ	USAGE	MODEL YEAR
1			AXLE HOUSING		FOR REFERENCE ONLY	
2	74004500	26064500	LARGE PINION BEARING ASM (CUP & CONE)	1	C;K;WCC	2001+
3	40101174		RING & PINION GEAR SET (3.42 RATIO; 2 CUT)			
3	40088177		RING & PINION GEAR SET (3.73 RATIO; 2 CUT)	1	C;K	2001+
3	40088195		RING & PINION GEAR SET (4.10 RATIO; 2 CUT)	1	C;K	2001+
3	40005991		RING & PINION GEAR SET (4.63 RATIO; 2 CUT)	1	WCC	2001+
3	40030646		RING & PINION GEAR SET (5.13 RATIO; 2 CUT)	1		
4	74004499	26064499	DIFF. CASE BEARING ASM (CUP & CONE)	1	C;K;WCC	2001+
5	AVAILABLE IN KIT ONLY		SNAP RING	1	C;K;WCC	2001+
6	AVAILABLE IN KIT ONLY		PINION SHAFT	1	C;K;WCC	2001+
7	40101021		DIFFERENTIAL OPEN CASE (WITHOUT INTERNALS)	1	C;K	2001+
7	40101020		DIFFERENTIAL OPEN CASE ASSEMBLY (WITH INTERNALS)	1	C;K	2001+
7	40099548		HELICAL LIMITED SLIP DIFF ASSEMBLY - TRACRITE GT (NOT PRODUCTION BUT WILL FIT GM AXLE)	1	C;K	2001+
8	40022812	26064505	RING GEAR BOLT W/ ADHESIVE	12	C;K;WCC	2001+
9	AVAILABLE IN KIT ONLY		PINION THRUST WASHER	2	C;K;WCC	2001+
10	AVAILABLE IN KIT ONLY		PINION GEAR	2	C;K;WCC	2001+
11	AVAILABLE IN KIT ONLY		SIDE GEAR	2	C;K;WCC	2001+
12	AVAILABLE IN KIT ONLY		SIDE THRUST WASHER	2	C;K;WCC	2001+
13			DUAL WHEEL HUB (WITHOUT INTERNALS)		FOR REFERENCE ONLY	
13			SINGLE WHEEL HUB (WITHOUT INTERNALS)		FOR REFERENCE ONLY	
14			SINGLE WHEEL ROTOR		FOR REFERENCE ONLY	
14			DUAL WHEEL ROTOR		FOR REFERENCE ONLY	
14			HUB & ROTOR ASSEMBLY		FOR REFERENCE ONLY	
15	40042353	15898643	AXLE SHAFT (913 MM; 30 TOOTH; 8 BOLT; DUAL WHEEL; DISC; 2WD)	2	C;K;G	2008+
15	40051861	20920665	AXLE SHAFT (947 MM; 30 TOOTH; 8 BOLT; DUAL WHEEL DISC; 2WD & 4WD)	2	C;K	2010+
15	40051863	20920663	AXLE SHAFT (1023 MM; 30 TOOTH; 8 BOLT; DUAL WHEEL DISC; 2WD & 4WD)	2	C;K	2010+
15	40051859	20920662	AXLE SHAFT (932 MM; 30 TOOTH; 8 BOLT; DUAL WHEEL DISC; 2WD & 4WD)	2	C;K	2010+
16	74003027	12471484	PINION NUT	1	C;K;WCC	2001+
17	40003255	12471485	PINION NUT WASHER	1	C;K;WCC	2001+
18	40007479	12471498	PINION YOKE (1485 U-JOINT; 4 FOOTED)	1	C;K	1999-2010
18	40082168	22754165	PINION YOKE (1485 U-JOINT; 4 FOOTED)	1	C;K	2011+
18	40003618		PINION YOKE (1415 U-JOINT; 4 FOOTED)	1	C;K	1999-2010
18	26060884		PINION YOKE - REGULAR WITHOUT DAMPER 1415			
19	74004030	26064030	TRIPLE LIP PINION SEAL	1	C;K;WCC	2001+
20	74008356	9418356	SMALL PINION BEARING ASM (CUP & CONE)	1	C;K;WCC	2001+
21	74001051	12471647	COLLAPSIBLE SPACER	1	C;K;WCC	2001+
22	40001357	12471447	RUBBER OVER METAL COVERPAN GASKET	1	C;K	2001+

AAM 1150 REAR AXLE (14 BOLT)



GM 11.5" REAR AXLE

ILL #	AAM PART NUMBER	OE PART NUMBER	DESCRIPTION	REQ	USAGE	MODEL YEAR
23	40087967	20984339	COVERPAN	1	C;K	2001+
24	15823962	15823962	HUB SEAL	2	C;K	2001+
25	40000014	12473128	HUB GASKET	2	C;K	2001+
25	40051851	20920620	HUB GASKET - SINGLE & DUAL	2	C;K	2011+
26	15823962	15823962	HUB SEAL	2	C;K	2001+
26	20889025	20889025	HUB SEAL	2	C;K	2011+

74010015 11.5" REAR 14 BOLT - MASTER INSTALL KIT
Sierra, Silverado
MODEL YEAR 2001 to 2010

AAM PART #	O.E. PART #	DESCRIPTION	QTY
40003251		FILL PLUG ASM	1
40001357	12471447	RUBBER OVER METAL COVERPAN GASKET	1
40000014	12473128	HUB GASKET	2
40011051	12471647	COLLAPSIBLE SPACER	1
74004505	26064505	RING GEAR BOLT W/ ADHESIVE	12
40003027	12471484	PINION NUT	1
74004030	26064030	TRIPLE LIP PINION SEAL	1
40023476		WHEEL BOLT W/ ADHESIVE	16
40003255		PINION NUT WASHER	1
74003244	14042602	FILL/DRAIN PLUG WASHER	1
	26060977	PINION SEAL SLEEVE	1
	476753	FILL PLUG	1
40002169		COVERPAN BOLT W/ ADHESIVE	14
		PINION SHIM	18

74010016 11.5" REAR 14 BOLT - MASTER INSTALL KIT
Sierra, Silverado
MODEL YEAR 2011 to Current

AAM PART #	O.E. PART #	DESCRIPTION	QTY
	26060977	PINION SEAL SLEEVE	1
40005967		RUBBER OVER METAL COVERPAN GASKET	1
40001357	12471447	RUBBER OVER METAL COVERPAN GASKET	1
		PINION SHIM	18
40022812	26064505	RING GEAR BOLT W/ ADHESIVE	14
40023476		WHEEL BOLT W/ ADHESIVE	16
40042937		FILL/DRAIN PLUG	1
40007601		MAGNETIC FILL/DRAIN PLUG	1
40051851	20920620	HUB GASKET - SINGLE & DUAL	4
40011051	12471647	COLLAPSIBLE SPACER	2
40041239		SPECIAL COVERPAN BOLT	2
40020764		HEX BOLT W/ ADHESIVE	16
40003027	12471484	PINION NUT	1
74004030	26064030	TRIPLE LIP PINION SEAL	2
40003255	12471485	PINION NUT WASHER	1
40002169		COVERPAN BOLT W/ ADHESIVE	14

74067018 11.5" REAR 14 BOLT - MASTER BEARING KIT
Sierra, Silverado
MODEL YEAR 2011 to Current

AAM PART #	O.E. PART #	DESCRIPTION	QTY
40016979		DIFFERENTIAL BEARING ASM (CUP & CONE)	2
40003027		PINION NUT	1
40003255		PINION NUT WASHER	1
40011051		COLLAPSIBLE SPACER	1
40090049		PINION TAIL BEARING ROLLER	1
40090051		PINION TAIL TAPERED RACE	1
09418357		ROLLER ASM, BRG	1
26064030		PINION SEAL	1
09418358		PINION TAIL BEARING RACE	1

74045615 11.5" REAR 14 BOLT - 30 TOOTH - DIFFERENTIAL GEAR KIT
Sierra, Silverado
MODEL YEAR 2001 to 2006

AAM PART #	O.E. PART #	DESCRIPTION	QTY
		PINION GEAR	2
		SIDE THRUST WASHER	2
		SIDE GEAR	2
		PINION SHAFT	1
		PINION THRUST WASHER	2
		SNAP RING	1

74067011 11.5" REAR 14 BOLT - MASTER BEARING KIT
Sierra, Silverado
MODEL YEAR 2001 to 2010

AAM PART #	O.E. PART #	DESCRIPTION	QTY
	26064500	PINION HEAD BEARING ASM (CUP & CONE)	1
	9418357	PINION TAIL BEARING ROLLER	1
	9418358	PINION TAIL BEARING RACE	1
	26064030	PINION SEAL	1
74003027	40003027	PINION NUT	1
74003244	40003255	PINION NUT WASHER	1
74001051	40011051	COLLAPSIBLE SPACER	1
74004499	40016979	DIFFERENTIAL BEARING ASM (CUP & CONE)	2

74046293 11.5" REAR 14 BOLT - 30 TOOTH - DIFFERENTIAL GEAR KIT
Sierra, Silverado
MODEL YEAR 2007 to 2010

AAM PART #	O.E. PART #	DESCRIPTION	QTY
		PINION GEAR	2
		SIDE THRUST WASHER	2
		SIDE GEAR	2
		PINION SHAFT	1
		PINION THRUST WASHER	2
		SNAP RING	1

74030018 11.5" REAR 14 BOLT - COVERPAN KIT
Sierra, Silverado
MODEL YEAR 2001 to Current

AAM PART #	O.E. PART #	DESCRIPTION	QTY
40087967	20984339	COVERPAN	1
40001357	12471447	RUBBER OVER METAL COVERPAN GASKET	1
40041239		SPECIAL COVERPAN BOLT	2
40002169		COVERPAN BOLT W/ ADHESIVE	14
40042937		FILL/DRAIN PLUG	1

74020013 11.5" REAR 14 BOLT - PINION SEAL KIT
Sierra, Silverado
MODEL YEAR 2001 to Current

AAM PART #	O.E. PART #	DESCRIPTION	QTY
74004030	26064030	TRIPLE LIP PINION SEAL	1
40003255	12471485	PINION NUT WASHER	1
40011051	12471647	COLLAPSIBLE SPACER	1
40003027	12471484	PINION NUT	1
26060977		PINION SEAL SLEEVE	1

AAM 1150 REAR AXLE (14 BOLT)

