

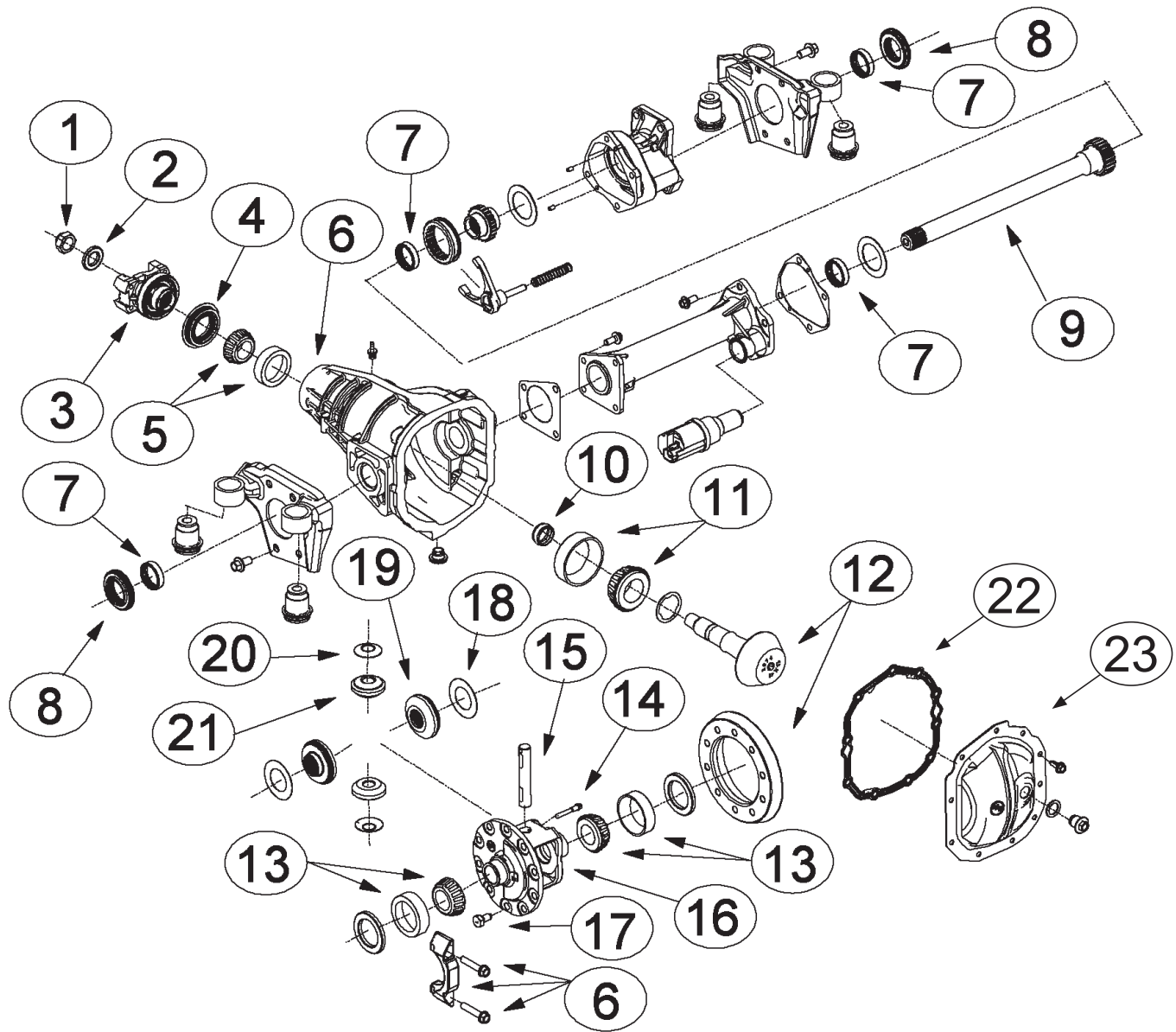


Demand the original.

Axle Components | Driveshaft Components | Repair Kits

AAM 7.6" IFS Salisbury

GM 7.6" FRONT AXLE



VEHICLE REFERENCE GUIDE

S, T TRUCK - GMT345, GMT355



ILL #	AAM PART NUMBER	OE PART NUMBER	DESCRIPTION	REQ	USAGE	MODEL YEAR
1	74003762	9783762	PREVAILING TORQUE PINION NUT	1	4WD	2004+
2	74007900	517900	PINION NUT WASHER	1	4WD	2004+
3	40035125		PINION YOKE	1	4WD	2004+
4	40024218	12479267	PINION SEAL	1	4WD	2004+
5	74007784	9417784	SMALL PINION BEARING ASM (CUP & CONE)	1	4WD	2004+
6			CARRIER HOUSING		FOR REFERENCE ONLY	
7	74003326	26053326	ROLLER BEARING ASM	4	4WD	2004+
8	70037764	15286593	OUTPUT SHAFT SEAL	2	4WD	2004+
9	40065837	19210911	INTERMEDIATE SHAFT (412 MM)	1	4WD	2004+
9	40045261	12479254	INTERMEDIATE SHAFT (419 MM)	1	AWD	2006+
10	74005792	9785792	COLLAPSIBLE SPACER	1	4WD	2004+
11	74000042	22510042	LARGE PINION BEARING (CUP & CONE)	1	4WD	2004+
12	40022978	12479298	RING & PINION GEARSET (3.42 RATIO; 2 CUT)	1	4WD	2004+
12	40020428	12479238	RING & PINION GEARSET (3.73 RATIO; 2 CUT)	1	4WD	2004+
12	40020431	15920600	RING & PINION GEARSET (4.10 RATIO; 2 CUT)	1	4WD	2004+
12	40028609	10360972	RING & PINION SET (4.56 RATIO; 2 CUT)	1	AWD & 4WD	2006+
13	74000095	9420095	DIFF. CASE BEARING ASM (CUP & CONE)	2	4WD	2004+
14	AVAILABLE IN KIT ONLY		PINION SHAFT LOCK SCREW	1	4WD	2004+
15	AVAILABLE IN KIT ONLY		PINION SHAFT	1	4WD	2004+
16	40041441		DIFFERENTIAL OPEN CASE (WITHOUT INTERNALS)	1	AWD & 4WD	2004+
16	40041442		DIFFERENTIAL OPEN CASE ASSEMBLY (WITH INTERNALS)	1	AWD & 4WD	2004+
17	40061033	11610549	SERRATED RING GEAR BOLT W/ ADHESIVE	10	4WD	2004+
18	AVAILABLE IN KIT ONLY		SIDE THRUST WASHER	2	4WD	2004+
19	AVAILABLE IN KIT ONLY		SIDE GEAR	2	4WD	2004+
20	AVAILABLE IN KIT ONLY		PINION THRUST WASHER	2	4WD	2004+
21	AVAILABLE IN KIT ONLY		PINION GEAR	2	4WD	2004+
22	40014817	12474249	RUBBER OVER METAL COVERPAN GASKET	1	AWD & 4WD	2004+
23	40014583	12479247	COVERPAN	1	AWD & 4WD	2004+



Demand the original.

Axle Components | Driveshaft Components | Repair Kits

AAM 7.6" IFS Salisbury

7401004 7.6" FRONT IFS - MASTER INSTALL KIT

H3, H3T, Colorado, Canyon

MODEL YEAR 2003 to Current

AAM PART #	O.E. PART #	DESCRIPTION	QTY
		SIDE SHIM	32
40007959		BOLT W/ ADHESIVE	8
40014912		TUBE GASKET	1
40002169		COVERPAN BOLT W/ ADHESIVE	10
74005792	9785792	COLLAPSIBLE SPACER	1
40014817	12474249	RUBBER OVER METAL COVERPAN GASKET	1
40065831		THRUST SPACER	1
40006690		PINION SEAL SLEEVE	1
40037764		OUTPUT SEAL	2
74007900	517900	PINION NUT WASHER	1
40007601		MAGNETIC FILL/DRAIN PLUG	1
40014913		DISCONNECT HOUSING GASKET	1
		PINION SHIM	31
74003762	9783762	PREVAILING TORQUE PINION NUT	1
40061033	11610549	SERRATED RING GEAR BOLT W/ ADHESIVE	10
40036375		BOLT W/ WASHER & ADHESIVE	8
74003326	26053326	ROLLER BEARING ASM	3

74067006 7.6" FRONT/REAR - MASTER BEARING KIT

Colorado, Canyon, Camaro, Firebird, Astro, Safari, S10, Sonoma, Blazer, Jimmy, Bravada, H3, H3T

MODEL YEAR Front: 2003 to Current, Rear: 1982 to Current

AAM PART #	O.E. PART #	DESCRIPTION	QTY
	22510042	PINION HEAD BEARING ASM (CUP & CONE)	1
	9417785	PINION TAIL BEARING ROLLER	1
	9417786	PINION TAIL BEARING RACE	1
74003762	9783762	PREVAILING TORQUE PINION NUT	1
74007900	517900	PINION NUT WASHER	1
74005792	9785792	COLLAPSIBLE SPACER	1
	457233	DIFF BEARING ROLLER	2
74000095	9420096	DIFF BEARING RACE	2
	40006689	PINION SEAL	1

GM 7.6" FRONT AXLE

74043199 7.6" FRONT IFS - 28 TOOTH - DIFFERENTIAL GEAR KIT

Colorado, Canyon, H3, H3T

MODEL YEAR 2004 to Current

AAM PART #	O.E. PART #	DESCRIPTION	QTY
		SIDE GEAR	2
		SIDE THRUST WASHER	2
		PINION SHAFT LOCK SCREW	1
		PINION SHAFT	1
		PINION GEAR	2
		PINION THRUST WASHER	2

74020004 7.6" FRONT IFS - PINION SEAL KIT

H3, H3T, Colorado, Canyon

MODEL YEAR 2003 to 2012

AAM PART #	O.E. PART #	DESCRIPTION	QTY
40024218	12479267	PINION SEAL	1
74003762	9783762	PREVAILING TORQUE PINION NUT	1
74005792	9785792	COLLAPSIBLE SPACER	1
40006690		PINION SEAL SLEEVE	1
74007900	517900	PINION NUT WASHER	1

74050003 7.6" FRONT IFS - OUTPUT SHAFT SEAL KIT

H3, H3T, Colorado, Canyon

MODEL YEAR 2003 to 2012

AAM PART #	O.E. PART #	DESCRIPTION	QTY
74003326	26053326	ROLLER BEARING ASM	2
40037764		OUTPUT SEAL	2



**74030001 7.6" FRONT IFS -
COVERPAN KIT**

H3, H3T, Colorado, Canyon

MODEL YEAR 2004 to Current

AAM PART #	O.E. PART #	DESCRIPTION	QTY
40014583	12479247	COVERPAN	1
40014817	12474249	RUBBER OVER METAL COVERPAN GASKET	1
40002169		COVERPAN BOLT W/ ADHESIVE	10
40007601		MAGNETIC FILL/DRAIN PLUG	1

**74080004 7.6" FRONT IFS -
DISCONNECT SHIFTER KIT**

Colorado, Canyon

MODEL YEAR 2003 to Current

AAM PART #	O.E. PART #	DESCRIPTION	QTY
40014912		TUBE GASKET	1
40036375		BOLT W/ WASHER & ADHESIVE	8
74003326	26053326	ROLLER BEARING ASM	2
40007944		SHIFTER FORK	1
40007941		CONNECTOR GEAR	1
40007945		RETURN SPRING	1
40037764		OUTPUT SEAL	1
40065837	19210911	INTERMEDIATE SHAFT	1
40007173		ACTUATOR	1
40007946		WASHER	2
40007940		DISCONNECT SLEEVE	1
40014913		DISCONNECT HOUSING GASKET	1
40007959		BOLT W/ ADHESIVE	4

**74080005 7.6" FRONT IFS -
DISCONNECT SHIFTER KIT**

H3, H3T

MODEL YEAR 2005 to 2010

AAM PART #	O.E. PART #	DESCRIPTION	QTY
40037764		OUTPUT SEAL	1
40007959		BOLT W/ ADHESIVE	4
40036375		BOLT W/ WASHER & ADHESIVE	8
74003326	26053326	ROLLER BEARING ASM	1
40045261	12479254	INTERMEDIATE SHAFT	1
7401873	15521873	ROLLER BEARING ASM	1
46003010		THRUST WASHER	2
40019428		OUTPUT GASKET	1
40014912		TUBE GASKET	1
40017351		OUTPUT SHAFT COUPLER	1



Demand the original.

Axle Components | Driveshaft Components | Repair Kits

AAM 7.6" IFS Salisbury

7401004 7.6" FRONT IFS - MASTER INSTALL KIT

H3, H3T, Colorado, Canyon

MODEL YEAR 2003 to Current

AAM PART #	O.E. PART #	DESCRIPTION	QTY
		SIDE SHIM	32
40007959		BOLT W/ ADHESIVE	8
40014912		TUBE GASKET	1
40002169		COVERPAN BOLT W/ ADHESIVE	10
74005792	9785792	COLLAPSIBLE SPACER	1
40014817	12474249	RUBBER OVER METAL COVERPAN GASKET	1
40065831		THRUST SPACER	1
40006690		PINION SEAL SLEEVE	1
40037764		OUTPUT SEAL	2
74007900	517900	PINION NUT WASHER	1
40007601		MAGNETIC FILL/DRAIN PLUG	1
40014913		DISCONNECT HOUSING GASKET	1
		PINION SHIM	31
74003762	9783762	PREVAILING TORQUE PINION NUT	1
40061033	11610549	SERRATED RING GEAR BOLT W/ ADHESIVE	10
40036375		BOLT W/ WASHER & ADHESIVE	8
74003326	26053326	ROLLER BEARING ASM	3

74067006 7.6" FRONT/REAR - MASTER BEARING KIT

Colorado, Canyon, Camaro, Firebird, Astro, Safari, S10, Sonoma, Blazer, Jimmy, Bravada, H3, H3T

MODEL YEAR Front: 2003 to Current, Rear: 1982 to Current

AAM PART #	O.E. PART #	DESCRIPTION	QTY
	22510042	PINION HEAD BEARING ASM (CUP & CONE)	1
	9417785	PINION TAIL BEARING ROLLER	1
	9417786	PINION TAIL BEARING RACE	1
74003762	9783762	PREVAILING TORQUE PINION NUT	1
74007900	517900	PINION NUT WASHER	1
74005792	9785792	COLLAPSIBLE SPACER	1
	457233	DIFF BEARING ROLLER	2
74000095	9420096	DIFF BEARING RACE	2
	40006689	PINION SEAL	1

GM 7.6" FRONT AXLE

74043199 7.6" FRONT IFS - 28 TOOTH - DIFFERENTIAL GEAR KIT

Colorado, Canyon, H3, H3T

MODEL YEAR 2004 to Current

AAM PART #	O.E. PART #	DESCRIPTION	QTY
		SIDE GEAR	2
		SIDE THRUST WASHER	2
		PINION SHAFT LOCK SCREW	1
		PINION SHAFT	1
		PINION GEAR	2
		PINION THRUST WASHER	2

74020004 7.6" FRONT IFS - PINION SEAL KIT

H3, H3T, Colorado, Canyon

MODEL YEAR 2003 to 2012

AAM PART #	O.E. PART #	DESCRIPTION	QTY
40024218	12479267	PINION SEAL	1
74003762	9783762	PREVAILING TORQUE PINION NUT	1
74005792	9785792	COLLAPSIBLE SPACER	1
40006690		PINION SEAL SLEEVE	1
74007900	517900	PINION NUT WASHER	1

74050003 7.6" FRONT IFS - OUTPUT SHAFT SEAL KIT

H3, H3T, Colorado, Canyon

MODEL YEAR 2003 to 2012

AAM PART #	O.E. PART #	DESCRIPTION	QTY
74003326	26053326	ROLLER BEARING ASM	2
40037764		OUTPUT SEAL	2



**74030001 7.6" FRONT IFS -
COVERPAN KIT**

H3, H3T, Colorado, Canyon

MODEL YEAR 2004 to Current

AAM PART #	O.E. PART #	DESCRIPTION	QTY
40014583	12479247	COVERPAN	1
40014817	12474249	RUBBER OVER METAL COVERPAN GASKET	1
40002169		COVERPAN BOLT W/ ADHESIVE	10
40007601		MAGNETIC FILL/DRAIN PLUG	1

**74080004 7.6" FRONT IFS -
DISCONNECT SHIFTER KIT**

Colorado, Canyon

MODEL YEAR 2003 to Current

AAM PART #	O.E. PART #	DESCRIPTION	QTY
40014912		TUBE GASKET	1
40036375		BOLT W/ WASHER & ADHESIVE	8
74003326	26053326	ROLLER BEARING ASM	2
40007944		SHIFTER FORK	1
40007941		CONNECTOR GEAR	1
40007945		RETURN SPRING	1
40037764		OUTPUT SEAL	1
40065837	19210911	INTERMEDIATE SHAFT	1
40007173		ACTUATOR	1
40007946		WASHER	2
40007940		DISCONNECT SLEEVE	1
40014913		DISCONNECT HOUSING GASKET	1
40007959		BOLT W/ ADHESIVE	4

**74080005 7.6" FRONT IFS -
DISCONNECT SHIFTER KIT**

H3, H3T

MODEL YEAR 2005 to 2010

AAM PART #	O.E. PART #	DESCRIPTION	QTY
40037764		OUTPUT SEAL	1
40007959		BOLT W/ ADHESIVE	4
40036375		BOLT W/ WASHER & ADHESIVE	8
74003326	26053326	ROLLER BEARING ASM	1
40045261	12479254	INTERMEDIATE SHAFT	1
7401873	15521873	ROLLER BEARING ASM	1
46003010		THRUST WASHER	2
40019428		OUTPUT GASKET	1
40014912		TUBE GASKET	1
40017351		OUTPUT SHAFT COUPLER	1