

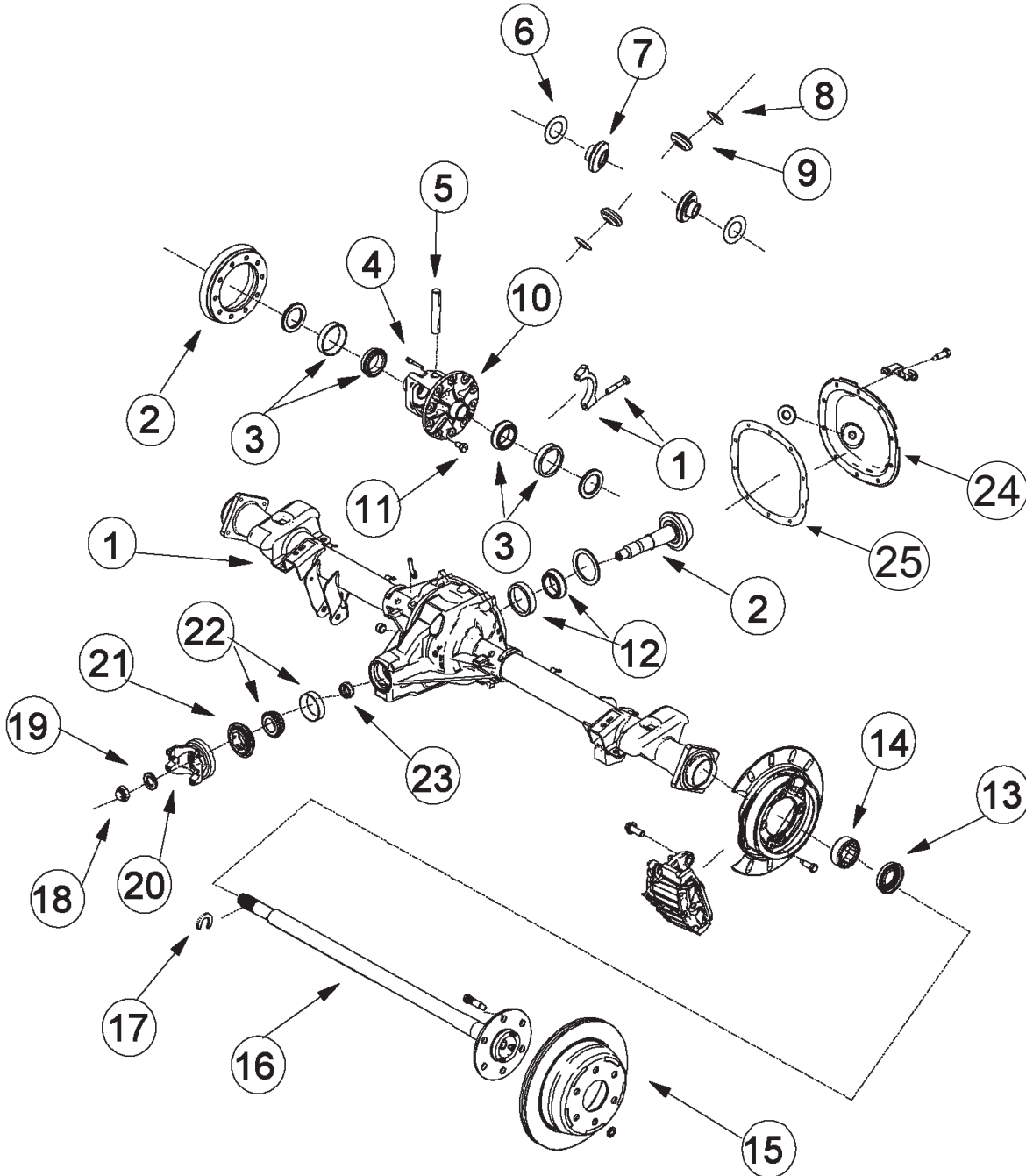


Demand the original.

Axle Components | Driveshaft Components | Repair Kits

AAM 7.6" Salisbury (10-Bolt)

GM 7.6" REAR AXLE



VEHICLE REFERENCE GUIDE

S	TRUCK - 2-WHEEL DRIVE MID-SIZE PICK-UPS AND BLAZERS - POSTAL TRUCKS 1982-1985
T	TRUCK - 4-WHEEL DRIVE MID-SIZE PICK-UPS AND BLAZERS
M	VAN - 2-WHEEL DRIVE VAN (ASTRO, SAFARI)
L	VAN - ALL-WHEEL DRIVE VAN (ASTRO, SAFARI)
F	CAR - CAMARO, FIREBIRD



ILL #	AAM PART NUMBER	OE PART NUMBER	DESCRIPTION	REQ	USAGE	MODEL YEAR
1			AXLE HOUSING		FOR REFERENCE ONLY	
2	40022978	12479298	RING & PINION GEARSET (3.42 RATIO; 2 CUT)	1	F,S;T;POSTAL	1991-1993;1995+
2	40020428	12479239	RING & PINION GEARSET (3.73 RATIO; 2 CUT)	1	S;T;M;L	1982+
2	40020431	12479240	RING & PINION GEARSET (4.10 RATIO; 2 CUT)	1	S;T;M;L	1982+
3	AVAILABLE IN KIT ONLY		DIFF. CASE BEARING ASM (CUP & CONE)	2	S;T;M;L;POSTAL	1982+
4	AVAILABLE IN KIT ONLY		PINION SHAFT LOCK SCREW	1	S;T;M;L;POSTAL	1982+
5	AVAILABLE IN KIT ONLY		PINION SHAFT	1	S;T;M;L	1982+
6	AVAILABLE IN KIT ONLY		SIDE THRUST WASHER	2	S;T;M;L	1988+
7	AVAILABLE IN KIT ONLY		SIDE GEAR	2	S;T;M;L	1988+
8	AVAILABLE IN KIT ONLY		PINION THRUST WASHER	2	S;T;M;L	1988+
9	AVAILABLE IN KIT ONLY		PINION GEAR	2	S;T;M;L	1988+
10	74033477	26033477	DIFFERENTIAL OPEN CASE (WITHOUT INTERNALS)	1	F,S;T;M;L	1985+
10	74038615	26058615	DIFFERENTIAL OPEN CASE ASSEMBLY (WITH INTERNALS)	1	F,S;T;M;L	1985+
11	40061033		SERRATED RING GEAR BOLT W/ ADHESIVE	10	S;T;M;L;POSTAL	1982+
12			LARGE PINION BEARING ASM (CUP & CONE)	1	S;T;M;L;POSTAL	1982+
13	40001710		OUTPUT SEAL	2	S;T;M;L	1988+
14	40008157		ROLLER BEARING ASM	2	M;L	2002+
15			ROTOR	2	M;L	2003+
15			ROTOR	2	S;T	1997+
16	74029972	26059972	AXLE SHAFT WITH EXCITER RING & BOLTS (809 MM; 28 TOOTH; 5 BOLT; DISC)	2	F	1992-2002
16	74023488	26064388	AXLE SHAFT (675 MM; 28 TOOTH; 5 BOLT; DRUM; 2WD)	2	S	1998+
16	74026760	26016760	AXLE SHAFT (788 MM; 28 TOOTH; 5 BOLT; DRUM; 2WD)	2	POSTAL	1990-1995
16	26058696		AXLE SHAFT (671MM; 28 TOOTH; 5 BOLT; 2WD & 4WD) LH/RH	2	S;T	1998-2003
16	26064387		AXLE SHAFT (675MM; 28 TOOTH; 5 BOLT; 2WD) LH/RH	2	S	1998-2003
16	26059962		AXLE SHAFT (809MM; 28 TOOTH;; 5 BOLT) LH/RH	2	F CAR	1998-2002
16	26063146		AXLE SHAFT (812MM; 28 TOOTH;; 5 BOLT)	2	F CAR	1993-97
17	74004171	344171	AXLE C LOCK	2	S;T;M;L;POSTAL	1982+
18	74003762	9783762	PREVAILING TORQUE PINION NUT	1	S;T;M;L;POSTAL	1982+
19	74007900	517900	PINION NUT WASHER	1	S;T;M;L;POSTAL	1982+
20	40016324	12479331	PINION YOKE (1344 U-JOINT; 4 FOOTED)	1	S;T;M;L	2000+
21	40006689		PINION SEAL	1	S;T;M;L	1982+
22			SMALL PINION BEARING ASM (CUP & CONE)	1	S;T;M;L	1982+
23	9785792		COLLAPSIBLE SPACER	1	S;T;M;L	1982+
24	40004968		COVERPAN	1	S;T;M;L;POSTAL	1975-2001
25	26016661		COVER PAN GASKET	1	S;T;M;L;POSTAL	1975-2005



Demand the original.

Axle Components | Driveshaft Components | Repair Kits

AAM 7.6" Salisbury (10-Bolt)

74010003 7.6" REAR 10 BOLT - MASTER INSTALL KIT

S10, Sonoma, Astro, Safari, Camaro, Firebird, Trans AM

MODEL YEAR 2000 to Current

AAM PART #	O.E. PART #	DESCRIPTION	QTY
26029137		SEAL ASM - F-CAR '93 - '02	2
26029139		SEAL ASM - M/L DISC '03 - '05	2
40001710		OUTPUT SEAL	2
26011061		SEAL ASM - S/T '92 - '04	2
517900		PINION NUT WASHER	1
26016661		COVERPAN GASKET	1
74003762	9783762	PREVAILING TORQUE PINION NUT	1
74004171	344171	AXLE C LOCK	2
40061033		SERRATED RING GEAR BOLT W/ ADHESIVE	10
9785792		COLLAPSIBLE SPACER	1
563592		COVERPAN BOLT	10
3858700		SPECIAL COVERPAN BOLT	1
40006690		PINION SEAL SLEEVE	1
40006689		PINION SEAL	1
		SIDE SHIM	31
		PINION SHIM	31

74067006 7.6" FRONT/REAR - MASTER BEARING KIT

Colorado, Canyon, Camaro, Firebird, Astro, Safari, S10, Sonoma, Blazer, Jimmy, Bravada, H3, H3T

MODEL YEAR Front: 2003 to Current, Rear: 1982 to Current

AAM PART #	O.E. PART #	DESCRIPTION	QTY
	22510042	PINION HEAD BEARING ASM (CUP & CONE)	1
	9417785	PINION TAIL BEARING ROLLER	1
	9417786	PINION TAIL BEARING RACE	1
74003762	9783762	PREVAILING TORQUE PINION NUT	1
74007900	517900	PINION NUT WASHER	1
74005792	9785792	COLLAPSIBLE SPACER	1
	457233	DIFF BEARING ROLLER	2
74000095	9420096	DIFF BEARING RACE	2
	40006689	PINION SEAL	1

GM 7.6" REAR AXLE

74042550 7.6" REAR 10 BOLT-28 TOOTH - DIFFERENTIAL GEAR KIT

Camaro, Firebird, Astro, Safari, S10, Sonoma, Blazer, Jimmy, Bravada

MODEL YEAR 1989 to 2004

AAM PART #	O.E. PART #	DESCRIPTION	QTY
		PINION GEAR	2
		SIDE THRUST WASHER	2
		SIDE GEAR	2
		PINION SHAFT	1
		PINION THRUST WASHER	2
		PINION SHAFT SCREW	1

74020005 7.6" REAR 10 BOLT - PINION SEAL KIT

Camaro, Firebird, Trans-AM, S10, Sonoma, Blazer, Jimmy, Bravada, Astro, Safari, Colorado, Canyon

MODEL YEAR 2000 to Current

AAM PART #	O.E. PART #	DESCRIPTION	QTY
40006689		PINION SEAL	1
40006690		PINION SEAL SLEEVE	1
9785792		COLLAPSIBLE SPACER	1
9785792		PINION NUT	1
74007900	517900	PINION NUT WASHER	1



74030002 7.6" REAR 10 BOLT - COVERPAN KIT

Camaro, Firebird, Astro, Safari, S10, Sonoma, Jimmy, Blazer, Bravada

MODEL YEAR 1993 to 2002

AAM PART #	O.E. PART #	DESCRIPTION	QTY
3858700		SPECIAL COVERPAN BOLT	2
26016661		COVERPAN GASKET	1
563592		COVERPAN BOLT	10
40004968		COVERPAN	1

74050010 7.6" REAR - OUTPUT SHAFT SEAL KIT

Astro, Safari (Late)

MODEL YEAR 2002 to Current

AAM PART #	O.E. PART #	DESCRIPTION	QTY
40001710		OUTPUT SEAL	2
40016199		TONE RING	2
40008157		ROLLER BEARING ASM	2
74004171	344171	AXLE C LOCK	2

74050007 GM 7.60 REAR - WHEEL END KIT

Camaro, Firebird, Trans-Am

MODEL YEAR 1992 - 2002

AAM PART #	O.E. PART #	DESCRIPTION	QTY
344171		C-LOCKS	2
26029139		OUTPUT SEAL	2
40010075		WHEEL BEARING	2

74050008 GM 7.60 REAR - WHEEL END KIT

Astro, Safari (early)

MODEL YEAR 1990 - 2002

AAM PART #	O.E. PART #	DESCRIPTION	QTY
344171		C-LOCKS	2
26011061		OUTPUT SEAL	2
40011045		WHEEL BEARING	2

74050009 GM 7.60 REAR - WHEEL END KIT

S10, Sonoma, Blazer, Jimmy, Bravada

MODEL YEAR 1992 - 2004

AAM PART #	O.E. PART #	DESCRIPTION	QTY
344171		C-LOCKS	2
26029137		OUTPUT SEAL	2
40010075		WHEEL BEARING	2