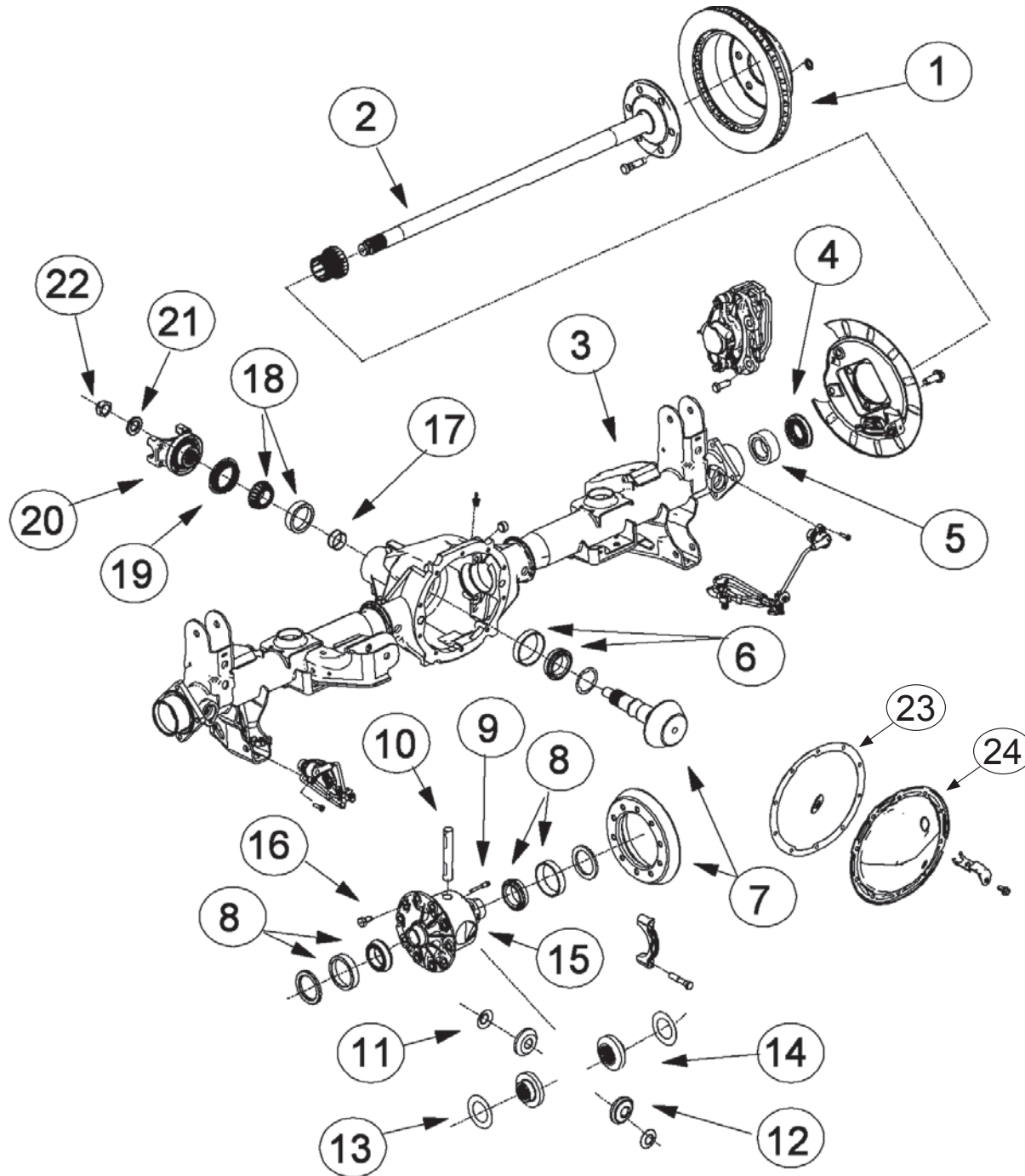




GM 8.6" REAR AXLE



VEHICLE REFERENCE GUIDE

C/K	GMT-400-PICKUP SILVERADO, SIERRA	GMT-420 - UTILITIES ESCALADE/DENALI/TAHOE/YUKON
	GMT-430 - UTILITIES SUBURBAN/YUKON XL	GMT-800 - PICK-UP SILVERADO, SIERRA
	GMT-820 - UTILITIES ESCALADE/DENALI/TAHOE/YUKON	GMT-830 - UTILITIES SUBURBAN/YUKON XL
SSR	GMT-368	
G	FULL-SIZE VAN (ALSO GMT-600), EXPRESS/SAVANA	

ILL #	AAM PART NUMBER	OE PART NUMBER	DESCRIPTION	REQ	USAGE	MODEL YEAR
1			ROTOR	2	C/K	2003+
1			BRAKE DRUM	2	C/K	2006+
2	40016171	12479285	AXLE SHAFT (853 MM; 30 TOOTH; 6 BOLT; DISC)	2	C/K	2003+
2	40032789	19133413	AXLE SHAFT RH (803 MM; 30 TOOTH; 6 BOLT; DISC)	1	GMT370,S;T/GMT368,SSR	2006
2	40032788	19133412	AXLE SHAFT LH (840 MM; 30 TOOTH; 6 BOLT; DISC)	1	GMT370,S;T/GMT368,SSR	2006
2	40019701	15286380	AXLE SHAFT (866 MM; 30 TOOTH; 6 BOLT; DISC)	2	C/K	2007+
3			AXLE HOUSING		FOR REFERENCE ONLY	
4	40001710	12471686	OUTPUT SEAL	2	C/K	2003+
5	40008157	12479031	ROLLER BEARING ASM	2	C/K	2003+
6	40027030	15286375	LARGE PINION BEARING ASM (CUP & CONE)	1	C/K	2003-2008
6	40048041	25824251	LARGE PINION BEARING ASM (CUP & CONE)	1	C/K	2009
7	40048438	25824237	RING & PINION GEAR SET (3.42 RATIO)	1	C/K	2003+
7	40049429	25824240	RING & PINION GEAR SET (3.73 RATIO; 2 CUT)	1	C/K	2003+
7	40049433	25824241	RING GEAR & PINION SET (4.10 RATIO)	1	C/K	2003+
8	40048054	25824250	DIFF. CASE BEARING ASM (CUP & CONE)	2	C/K	2000+
9	AVAILABLE IN KIT ONLY		PINION SHAFT LOCK SCREW	1	C/K	2003+
10	AVAILABLE IN KIT ONLY		PINION SHAFT	1	C/K	2003+
11	AVAILABLE IN KIT ONLY		PINION THRUST WASHER	2	C/K	2003+
12	AVAILABLE IN KIT ONLY		PINION GEAR	2	C/K	2003+
13	AVAILABLE IN KIT ONLY		SIDE THRUST WASHER	2	C/K	2003+
14	AVAILABLE IN KIT ONLY		SIDE GEAR	2	C/K	2003+
15	74030481	26010481	DIFFERENTIAL OPEN CASE (WITHOUT INTERNALS) 28 TOOTH	1	C/K;G	2000+
15	40048044	19244836	DIFFERENTIAL OPEN CASE ASSEMBLY (WITH INTERNALS)	1	C/K;G	2000+
16	40061033	11610549	SERRATED RING GEAR BOLT W/ ADHESIVE	10	C/K	2003+
17	74004726	1234726	COLLAPSIBLE SPACER	1	C/K	2003+
18	40030015	15286376	SMALL PINION YOKE BEARING ASM (CUP & CONE)	1	C/K	2003+
18	40048057	25824252	SMALL PINION YOKE BEARING ASM (CUP & CONE)	1	C;K;G	2009+
19	74004029	26064029	PINION SEAL	1	C/K	2003+
19	74000876	26060876	PINION SEAL	1	C;K;G	2009+
20	40090474		PINION YOKE (1355 UJT; 4 FOOTED) WITHOUT SLEEVE	1	C;K;G	2009+
21	74007900	517900	PINION NUT WASHER	1	C/K	2003+
22	74003762	9783762	PREVAILING TORQUE PINION NUT	1	C/K	2003+
23	40026736	15807693	COVERPAN GASKET	1	C/K	1982-2008
24	40026278	15286331	COVERPAN	1	C/K	1982-2008
23	40018901	15860607	RUBBER OVER METAL COVERPAN GASKET	1	C/K	2009+
24	40039162	25824253	COVERPAN	1	C/K	2009+

AAM 860 - MULTI-LINK REAR AXLE (10 BOLT)



GM 8.6" REAR AXLE

7401008 8.6" REAR 10 BOLT - MASTER INSTALL KIT

Sierra, Silverado, Silverado SS, Tahoe, Yukon, Escalade, Avalanche, Suburban, H3, H3T, Savana, Express, SSR, S10, Sonoma, Blazer, Jimmy, Bravada, Saab 9-7X

MODEL YEAR 1998 to Current

AAM PART #	O.E. PART #	DESCRIPTION	QTY
74003322	3833322	AXLE C LOCK	2
40018901		RUBBER OVER METAL COVERPAN GASKET	2
40060238		SPECIAL COVERPAN BOLT	2
74004028	26064028	PINION SEAL	1
		SIDE SHIM	10
		PINION SHIM	31
	26060975	PINION SEAL SLEEVE	1
74004029	26064029	PINION SEAL	1
40007601		MAGNETIC FILL/DRAIN PLUG	1
40061033	11610549	SERRATED RING GEAR BOLT W/ ADHESIVE	10
74007900	517900	PINION NUT WASHER	1
74003762	9783762	PREVAILING TORQUE PINION NUT	1
40010355	12479162	COLLAPSIBLE SPACER	1
40001710	12471686	OUTPUT SEAL	2
40002169		COVERPAN BOLT W/ ADHESIVE	10

74067008 8.6" REAR 10 BOLT - MASTER BEARING KIT

Silverado, Sierra, Yukon, Denali, Suburban, Escalade, Avalanche, H3, H3T

MODEL YEAR 1998 to Current
Except 98-03 Highwider and Full Size Van

AAM PART #	O.E. PART #	DESCRIPTION	QTY
40027032		PINION HEAD BEARING ROLLER	1
40027031		PINION HEAD BEARING RACE	1
40030017		PINION TAIL BEARING ROLLER	1
40030016		PINION TAIL BEARING RACE	1
74003762	9783762	PREVAILING TORQUE PINION NUT	1
74007900	517900	PINION NUT WASHER	1
	40010355	COLLAPSIBLE SPACER	1
	26061095	DIFF BEARING ROLLER	2
74000095	26061096	DIFF BEARING RACE	2
	26064028	PINION SEAL	1

74040441 8.6" REAR 10 BOLT - 30 TOOTH - DIFFERENTIAL GEAR KIT

S10, Sonoma, Blazer, Jimmy, Bravada, Silverado, Sierra, Yukon, Suburban, Escalade, Savana, Express, Caprice, G-Van 1500

MODEL YEAR 1990 - 1998 (Small Hub)

AAM PART #	O.E. PART #	DESCRIPTION	QTY
		PINION GEAR	2
		SIDE THRUST WASHER	2
		SIDE GEAR	2
		PINION SHAFT	1
		PINION THRUST WASHER	2
		PINION SHAFT LOCK SCREW	1

74040887 8.6" REAR 10 BOLT - 30 TOOTH - DIFFERENTIAL GEAR KIT

S10, Sonoma, Blazer, Jimmy, Bravada, Silverado, Sierra, Yukon, Tahoe, Suburban, Escalade, Denali, Savana, Express, H3, H3T

MODEL YEAR 2009 to Current

AAM PART #	O.E. PART #	DESCRIPTION	QTY
		PINION GEAR	2
		SIDE THRUST WASHER	2
		SIDE GEAR	2
		PINION SHAFT	1
		PINION THRUST WASHER	2
		PINION SHAFT LOCK SCREW	1

74046964 8.6" REAR 10 BOLT - 28 TOOTH - DIFFERENTIAL GEAR KIT

S10, Sonoma, Blazer, Jimmy, Bravada, Silverado, Sierra, Yukon, Suburban, Escalade, Savana, Express, Caprice, G-Van 1500

MODEL YEAR 1982 - 1989 (Small Hub)

AAM PART #	O.E. PART #	DESCRIPTION	QTY
		PINION GEAR	2
		THRUST WASHER	2
		SIDE GEAR	2
		PINION SHAFT	1
		PINION THRUST WASHER	2
		PINION SHAFT LOCK SCREW	1

74047014 8.6" REAR 10 BOLT - 30 TOOTH - DIFFERENTIAL GEAR KIT

S10, Sonoma, Blazer, Jimmy, Bravada, Silverado, Sierra, Yukon, Suburban, Escalade, Savana, Express, Caprice, G-Van 1500

MODEL YEAR 1999 - Mid 2000 (Large Hub)

AAM PART #	O.E. PART #	DESCRIPTION	QTY
		SIDE GEAR	2
		SIDE THRUST WASHER	2
		PINION SHAFT LOCK SCREW	1
		PINION GEAR	2
		PINION THRUST WASHER	2
		PINION SHAFT	1

74047015 8.6" REAR 10 BOLT - 30 TOOTH - DIFFERENTIAL GEAR KIT

S10, Sonoma, Blazer, Jimmy, Bravada, Silverado, Sierra, Yukon, Tahoe, Suburban, Escalade, Denali, Savana, Express, H3, H3T

MODEL YEAR Mid 2000 - 2008 (Large Hub)

AAM PART #	O.E. PART #	DESCRIPTION	QTY
		PINION GEAR	2
		SIDE THRUST WASHER	2
		SIDE GEAR	2
		PINION SHAFT	1
		PINION THRUST WASHER	2
		PINION SHAFT LOCK SCREW	1

74020007 8.6" REAR 10 BOLT - PINION SEAL KIT

Silverado, Sierra, Yukon, Avalanche, Escalade, Jimmy, Bravada, Express, Suburban, Colorado, Canyon, H3, Trailblazer, Envoy, S10, Rainier, Blazer, Jimmy, Savana, Express, Tahoe, Astro, Sonoma, Safari

MODEL YEAR Mid 1998 to Current

AAM PART #	O.E. PART #	DESCRIPTION	QTY
74004028	26064028	PINION SEAL	1
74003762	9783762	PREVAILING TORQUE PINION NUT	1
74007900	517900	PINION NUT WASHER	1
40010355	12479162	COLLAPSIBLE SPACER	1
74004029	26064029	PINION SEAL	1
	26060975	PINION SEAL SLEEVE	1

74050011 8.6" REAR 10 BOLT - OUTPUT SHAFT SEAL KIT

Sierra, Silverado, Tahoe, Yukon, Escalade, Suburban, H3, H3T, Savana, Express

MODEL YEAR 1998 to Current

AAM PART #	O.E. PART #	DESCRIPTION	QTY
40001710	12471686	OUTPUT SEAL	2
40030759		EXCITER RING	2
40008157		ROLLER BEARING ASM	2
	3833322	AXLE C LOCK	2
40016199		TONE RING	2

74030005 8.6" REAR 10 BOLT - COVERPAN KIT

Trailblazer, Envoy (Extended Version)

MODEL YEAR 2002 - 2009

AAM PART #	O.E. PART #	DESCRIPTION	QTY
40027020		COVERPAN	1
40004267		RUBBER OVER METAL COVERPAN GASKET	1
40002169		COVERPAN BOLT W/ ADHESIVE	10

74030006 8.6" REAR 10 BOLT - COVERPAN KIT

H3, H3T, Colorado, Canyon

MODEL YEAR 2004 to Current

AAM PART #	O.E. PART #	DESCRIPTION	QTY
40045940		COVERPAN	1
40018901		RUBBER OVER METAL COVERPAN GASKET	1
40002169		COVERPAN BOLT W/ ADHESIVE	10
40060238		SPECIAL COVERPAN BOLT	2
40007601		MAGNETIC FILL/DRAIN PLUG	1

74030007 8.6" REAR 10 BOLT - COVERPAN KIT

Sierra, Silverado, Yukon, Tahoe, Escalade, Avalanche, Savana, Express, S10, Sonoma, Blazer, Jimmy, Bravada

MODEL YEAR 1998 - Current

AAM PART #	O.E. PART #	DESCRIPTION	QTY
40039162		COVERPAN	1
40018901		RUBBER OVER METAL COVERPAN GASKET	1
40002169		COVERPAN BOLT W/ ADHESIVE	10
40007601		MAGNETIC FILL/DRAIN PLUG	1

AAM 860 - MULTI-LINK REAR AXLE (10 BOLT)