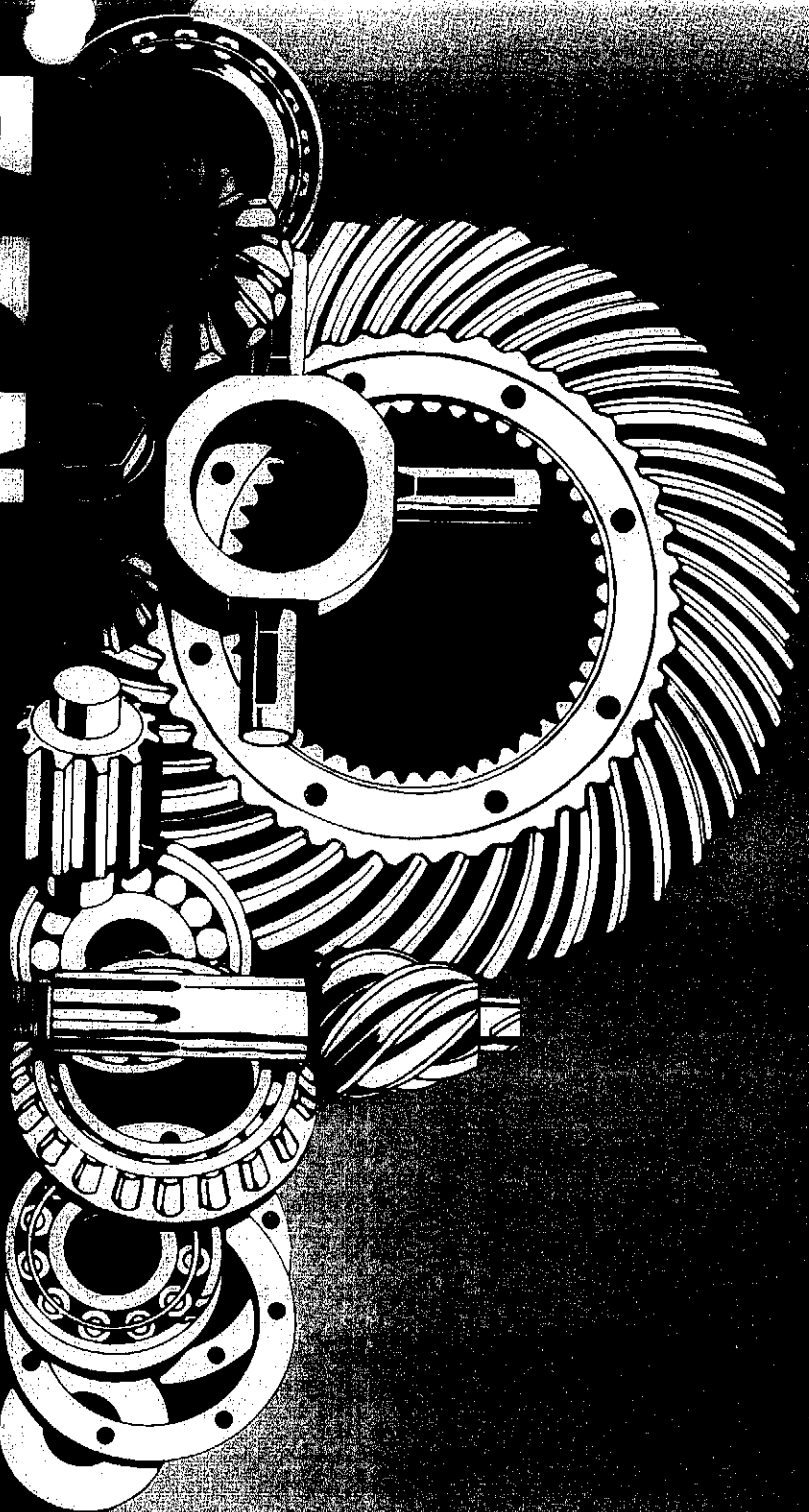


Parts Book EA-107S
January 1988

Eaton Single
Drive Axles

Eaton[®] Axles & Brakes



EATON

Eaton Axle Parts Book

Eaton Corporation, Axle & Brake Division, presents this Parts Book as an aid in the identification and procurement of replacement parts for Eaton Axles. The information included covers the differential carrier assembly, axle housing, axle shafts, shift system and special-designed parts kits and assemblies. Exploded views are used to illustrate the parts and show their relationship to other parts on the carrier. Each part is identified by an item number, which in turn, leads to a list containing part name and part number.

For convenience, part numbers have been included for all pieces of the carrier assembly. However, some of these parts, such as differential carrier and caps, are serviced only in kits or assemblies. Part numbers are for your reference only. Those parts not serviced separately are identified with NSS and appear in a lighter typeface.

Genuine Eaton Parts.

When you buy genuine Eaton replacement parts, you receive the same high quality and exacting tolerances you find in the original axle components.

Only genuine Eaton parts have the latest Eaton engineering improvements and assure equal or better performance than the original parts.

And Eaton backs you up with a responsive and capable service organization located strategically to provide you with emergency parts and service when you need them.

Insist on Eaton quality. Use genuine Eaton replacement parts.

Abbreviations

AR—As Required: Parts that vary in quantity with each axle. Example: shims.

NSS—Not Serviced Separately: Items which can only be purchased in sets, kit form or service assemblies. Example: ring gear sets.

RH/LH—Right Hand/Left Hand: Determined as viewed from behind the vehicle looking forward.

“RTV”—Gasket Compound: Formed-in-place gasket sealer. It is recommended for use on all surfaces requiring a gasket.

Eaton Parts Kits

Eaton Parts Kits give you an economical, convenient way to stock Eaton replacement parts. They contain all the parts you need to do a complete, professional job of overhauling or repairing your Eaton axle. And you have only one part number in one easily stored package to order, stock, identify, and satisfy your customers' needs.

Symbols:

This symbol is used throughout this book to identify parts included in major kits.

★ Carrier Basic Overhaul Kit

How to use this Parts Book

1. Refer to table of contents on opposite page for axle type, model or series, and page number.
2. Turn to the page that applies to the axle in question.
3. Locate the desired part in the exploded illustration and note Item No. This Item No. will lead you to the part name and number.
4. Refer to the related Parts Listing and locate the same Item No. and the name. If more than one part number is listed, refer to the axle model listings at top of list and select the part number that applies to the axle being serviced.

Ordering Eaton Axle Parts

Place all your parts orders through your truck dealer or manufacturer (OEM). Do not order parts directly from Eaton Corporation, Axle & Brakes Division.

Julian Calendar

Eaton uses the Julian calendar to establish date codes. Eaton has been using a four-digit code:

3 6 5 9 = December 31, 1979
Day Year

On February 19, 1982, Eaton began using a five-digit code:

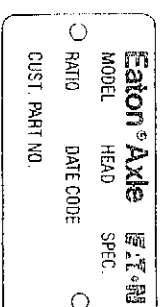
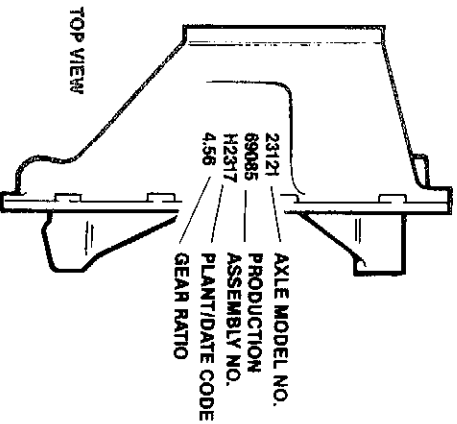
0 5 0 8 2 = February 19, 1982
Day Year

The first three digits designate the day of the year. January would be day 1; December 31 would be day 365 (except during a leap year when it would be 366). The last one or two digits identifies the year.

Differential Carrier Identification

Axle Model Nos.

Differential carrier identification is either stamped on the carrier itself or on a metal tag affixed to the carrier. Location on the carrier is the same.



Metal Tag

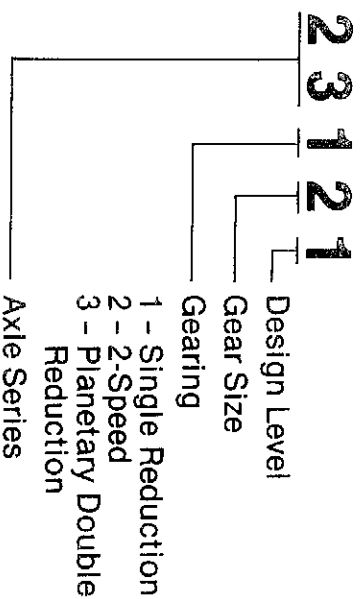


Table of Contents

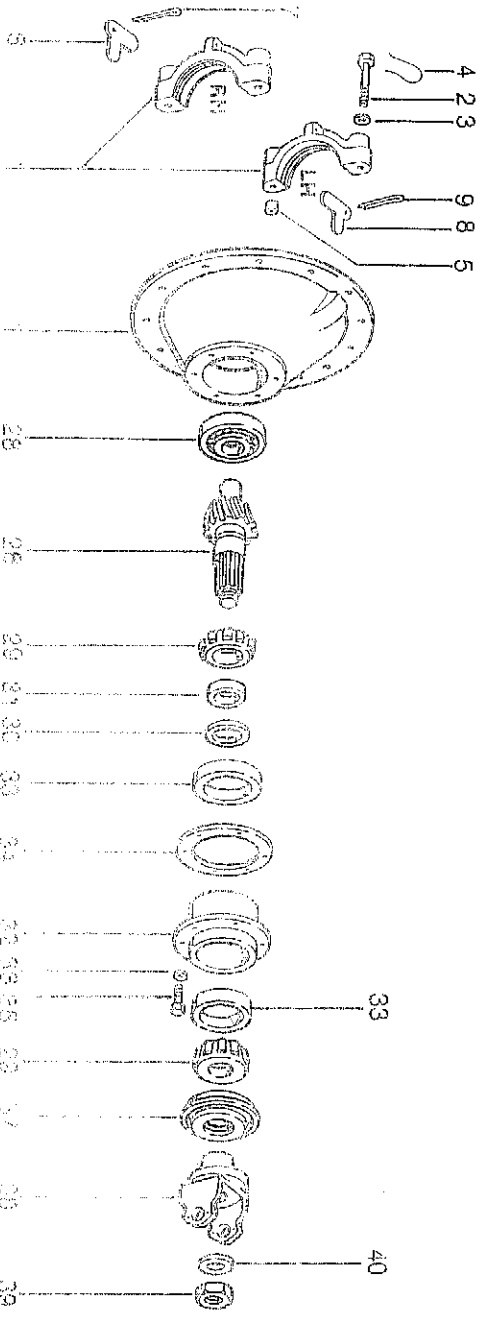
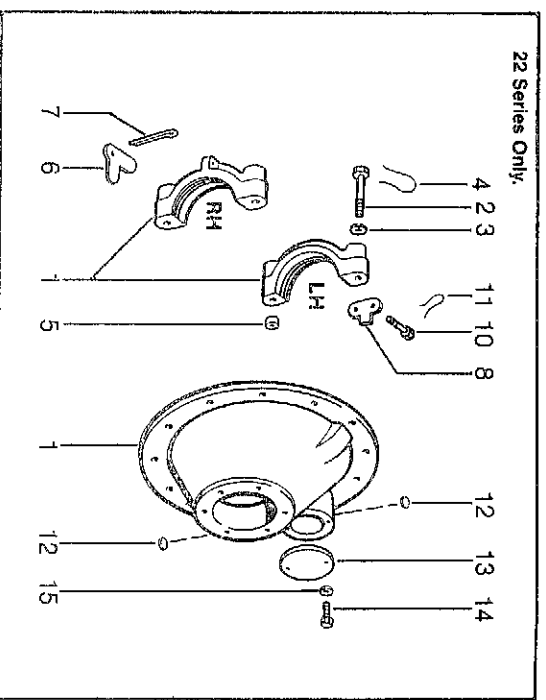
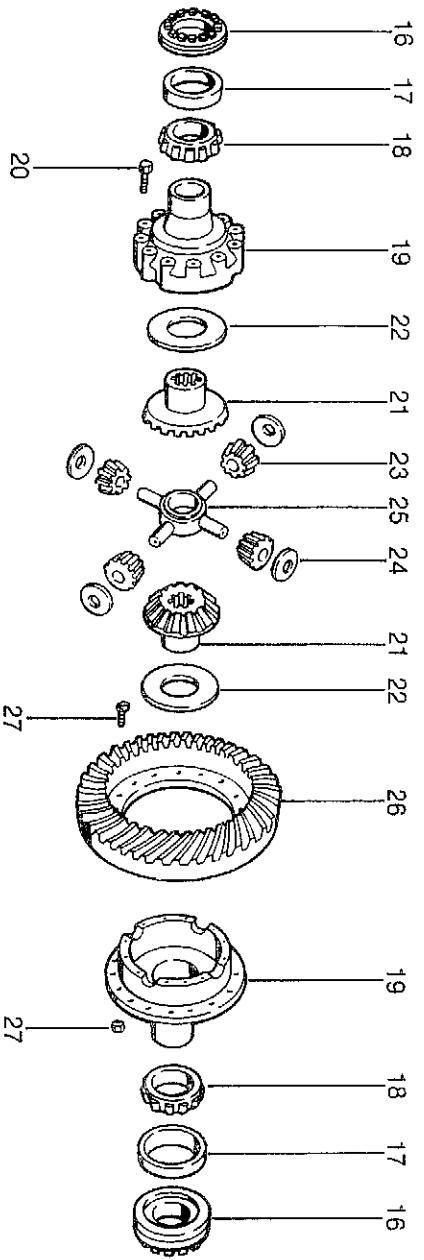
Exploded Views and Parts Lists for the following axle models:

NOTE: ONLY MODELS PRODUCED AFTER 1976 ARE COVERED IN THIS PUBLICATION. MODELS PRODUCED PRIOR TO 1976 CAN POSSIBLY BE SERVICED BY UPGRADING TO CURRENT PRODUCTION. CONTACT YOUR O.E.M.

SOME OF THE MODELS COVERED IN THIS PUBLICATION ARE OFFERED AS UPGRADED ASSEMBLIES — SEE EATON CARRIER EXCHANGE HANDBOOK EA-70.

SINGLE DRIVE AXLES, Single Reduction 17101, 17121, 18101, 18121, 21121, 22121, 23121, 26121	4
SINGLE DRIVE AXLES, 2-Speed 15201, 16244, 17201, 17221, 18201, 18221, 21221, 22221, 23221, 26221	5
SINGLE DRIVE AXLES, Planetary Double Reduction 15301, 16344, 17301, 17321, 18301, 18321, 21321, 22321, 23321, 26321, 35327	8
Pinion Bearing Spacers	7
Speedometer Adapters	7
Drive Pinion And Gear Set	12
◦ Single Reduction	13
◦ 2-Speed/Planetary Double Reduction	14
Axle Housings	14
Shift Systems	16
◦ Air Shift System	17
◦ Air Shifter Valve	18
◦ Piston Air Shift Unit	19
◦ 2-Speed Air-torsion Spring Shift Unit	20
◦ Electric Shift System	20
◦ 2-Speed Electric Shift Unit (post 1984 Trucks)	21
◦ 2-Speed Electric Shift Unit (pre 1984 Trucks)	22
Eaton Roadranger Service Support	24

Single Axle Differential Carrier Single Reduction



Item No.	Part Name	Qty Per Axle	1710121 1810121 21121	22121	23121 28121
BASIC OVERHAUL KIT (Contents identified with *)					
1	Diff. Carrier & Bearing Caps Carrier Casting No. (NSS) 67804 (Includes Item 1-4) 109364 (Includes Item 1-5, 12-13 plus (2) 20807 cap screws and (2) 90415 lockwashers) 98593 (Includes Items 1-5)	1	110555*	110634*	110559*
2	Bearing Cap Screw	4	67811	32732	32732
3	Flat Washer	4	26772	32912	32912
4	Lockwire Lockwire	4 2	90538 —	— 90538	12563 —
5	Dowel Bushing	2	—	32730	32730
6	Bearing Cap Adjuster Lock (RH)	1	13377	13377	14275
7	Cotter Pin (RH)	1	90873	90873	90876
8	Bearing Cap Adjuster Lock (LH)	1	14275	45448	14275
9	Cotter Pin (LH)	1	90876	—	90876
10	Cap Screw (LH)	2	—	12562	—
11	Lockwire	1	—	—	—
12	Upper Expansion Plug Lower Expansion Plug	1 1	— —	30703 9797	— —
13	Shift Fork Opening Cover	1	—	45521	—
14	Stud/Screw	2	—	119863	—
15	Flat Washer	2	—	119857	—
16	Diff. Bearing Adjuster (RH) 17, 21 Series 18 Series Diff. Bearing Adjuster (LH) (106694 includes 90943 cup)	1	— 110243 27842 31562	110243 — — 106694	21637 — — 39448
17	Diff. Bearing Cup (RH) Diff. Bearing Cup (LH)	1 1	9803* 90943*	9803* 90943*	15092* 19529*
18	Diff. Bearing Cone (RH) Diff. Bearing Cone (LH)	1 1	27813* 6082*	27813* 6082*	27876* 27666*
WHEEL DIFF CASE KIT (Includes Items 19-20) To service axles with 88678 case: 1/2" Bolt 3/8" Bolt To service axles with 110138 case: Ratios 3.36-5.29 Ratios 5.57-7.17 (Above kits include 110243 adjuster)					
19	Diff. Case (Plain Half) (NSS) Diff. Case (Flanged Half) (NSS) 1/2" Bolt 3/8" Bolt Ratios 3.36-5.29 Ratios 5.57-7.17 Ratios 3.55-4.11 Ratios 4.33-6.67	1 1 1 1 1 1 1 1	110138 — 91114 88677 193865 88677 — —	110138 — — — 193865 88677 — —	86777 — — — — — 88501 88776
20	Diff. Case Cap Screw WHEEL DIFF KIT (Contains Items 21-25 including required side gear) 17 Series 18, 21 Series WHEEL DIFF KIT LESS SIDE GEARS (Includes Items 22-25)	12 1 1 1 1	96271 — 114466 114470 119748	96271 114470 — — 119748	88503 114472 — — 116749

Item No.	Part Name	Qty	Per Axle	17-101-21 18101-21 21121	22121	23121 26121
21	Diff. Side Gear Straight Splines Involute Splines 17 Series 18 & 21 Series Involute Splines 22 Involute Splines 36	2 2 2 2 2 2		37072 — 110525 110527 — —	37069 110527 — — — —	— — — — 86784 93401
22	Side Gear Thrust Washer	2		27827*	27827*	27274*
23	Side Pinion	4		104139	104139	86780
24	Side Pinion Thrust Washer	4		27810*	27810*	86781*
25	Spider	1		38289	38289	86778
26	RING GEAR & DRIVE PINION SET (NSS) Matched parts, see separate listing on page 12	1				
27	RING GEAR BOLT & NUT KIT 1/2" Fasteners Bolts Nuts % " Fasteners Bolts Nuts For use with 1/2" drive gear and 1/2" diff. case holes Bolts Nuts	1 16 16 16 1 16 16 1 16 16 16		69957 69117 67592 70745 70745 110686 60606 120780 119865 67592	— — — 70745 110686 60600 — — —	— — — 70745 110686 60600 — — —
28	Pinion Pilot Bearing	1		15828*	15828*	119858*
29	Pinion Bearing Cone (Inner) Pinion Bearing Cone (Outer)	1 1		12496* 12496*	45460* 12496*	27239* 14218*
30	Pinion Bearing Spacer (See separate listing on page 7)	AR				
31	Pinion Bearing Spacer Washer	1		—	—	31366*
32	Pinion Bearing Cage & Cup Assy. (Includes Item 33) Ratios 3.55-3.70 (cage 75107) Other Ratios (cage 75109) (cage 107495) (cage 79245)	1 1 1 1 1		75108 75110 — — —	— — 107496 — —	— — — — 79246
33	Pinion Bearing Cup (Inner) Pinion Bearing Cup (Outer)	1 1		12495* 12495*	14217* 12495*	27238* 14217*
34	OIL SEAL & SHIM KITS (Includes Items 34 & 37 & Sealant) Pinion Bearing Cage Shims .003" .005" .010" .020"	1 AR		114165	115551	115581
35	Bearing Cage Cap Screw	6		113325	113325	113327
36	Lockwasher	6		—	—	90422
37	Oil Seal & Retainer Assy.	1		119427*	119427*	119432*
38	Input Yoke (See OEM Catalog)	1		—	—	—
39	Pinion Nut Ratios 3.55-4.33 Ratios 4.56-7.17	1 1 1		— 35206 35205	95206 — —	95262 — —
40	Flat Washer (With #95206 Nut) (With #95205 Nut) Gasket Compound	1 1 1		— 56364 4327* 107276*	56364* — — 107276*	— — — 107276*

Pinion Bearing Spacers

15 Series

.513"-91616	.521"-91624	.529"-91645 *	.537"-91671
.514"-91617	.522"-91625	.530"-91649 *	.538"-91672
.515"-91618	.523"-91627	.531"-91653 *	.539"-91673
.516"-91619	.524"-91629	.532"-91657 *	.540"-91674
.517"-91620	.525"-91631 *	.533"-91661 *	.541"-91675
.518"-91621	.526"-91633 *	.534"-91665 *	.542"-91676
.519"-91622	.527"-91637 *	.535"-91667 *	.543"-91677
.520"-91623	.528"-91641 *	.536"-91669 *	.544"-91678

16 Series

.623"-91500	.631"-91508	.639"-91527 *	.647"-91544
.624"-91501	.632"-91509	.640"-91531 *	.648"-91545
.625"-91502	.633"-91510	.641"-91535 *	.649"-91546
.626"-91503	.634"-91511 *	.642"-91537 *	.650"-91547
.627"-91504	.635"-91513 *	.643"-91539 *	.651"-91548
.628"-91505	.636"-91515 *	.644"-91541	.652"-91549
.629"-91506	.637"-91519 *	.645"-91542	.653"-91550
.630"-91507	.638"-91523 *	.646"-91543	.654"-91551

17, 18, 21, 22 Series

.623"-91552	.631"-91560	.639"-91580 *	.647"-91606
.624"-91553	.632"-91561	.640"-91584 *	.648"-91608
.625"-91554	.633"-91562	.641"-91588 *	.649"-91610
.626"-91555	.634"-91564 *	.642"-91592 *	.650"-91611
.627"-91556	.635"-91566 *	.643"-91596 *	.651"-91612
.628"-91557	.636"-91568 *	.644"-91600	.652"-91613
.629"-91558	.637"-91572 *	.645"-91602	.653"-91614
.630"-91559	.638"-91576 *	.646"-91604	.654"-91615

23, 26, 35 Series

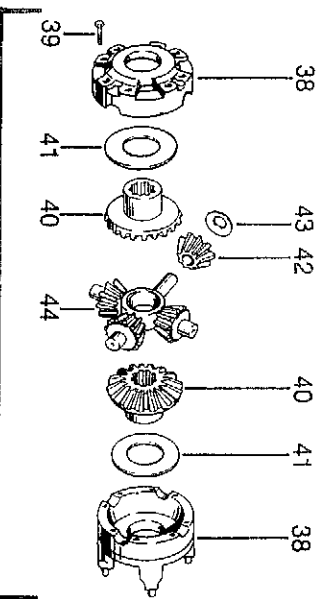
.167"-91679	.176"-91688	.185"-91702 *	.194"-91719
.168"-91680	.177"-91689	.186"-91704 *	.195"-91720
.169"-91681	.178"-91690 *	.187"-91706 *	.196"-91721
.170"-91682	.179"-91691 *	.188"-91708 *	.197"-91722
.171"-91683	.180"-91692 *	.189"-91710	.198"-91723
.172"-91684	.181"-91694 *	.190"-91712	.199"-91724
.173"-91685	.182"-91696 *	.191"-91714	.200"-91725
.174"-91686	.183"-91698 *	.192"-91716	.201"-91726
.175"-91687	.184"-91700 *	.193"-91718	.202"-91727

*Most popular

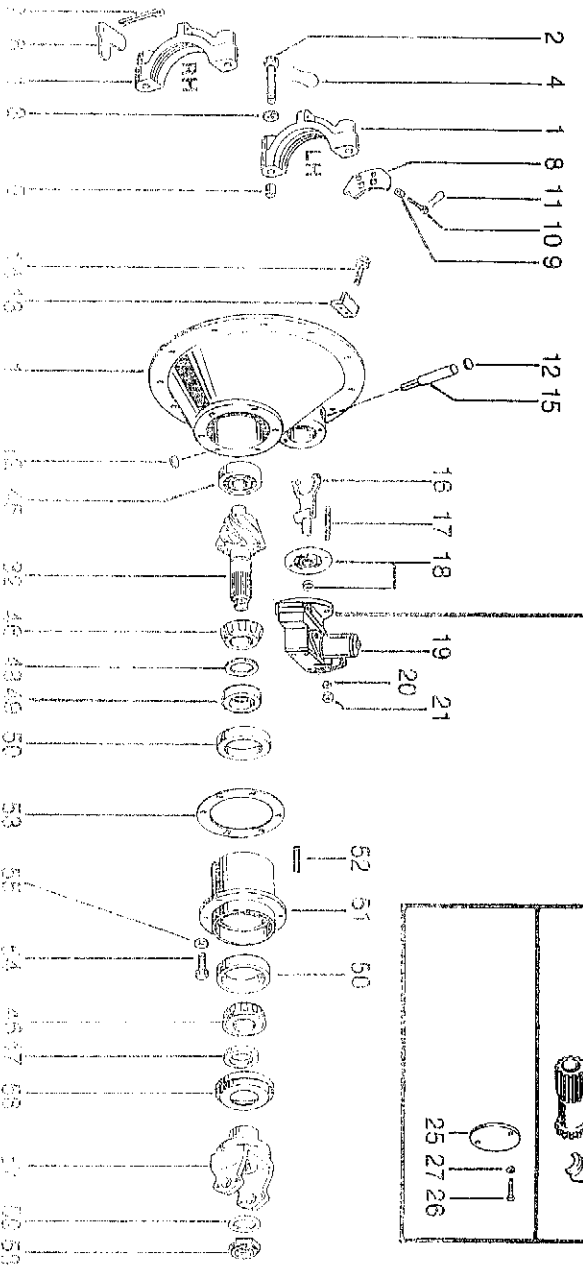
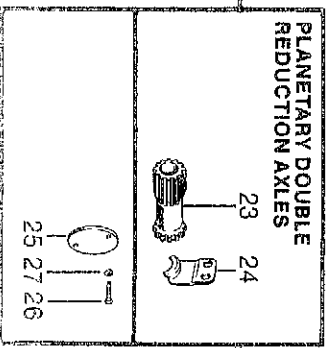
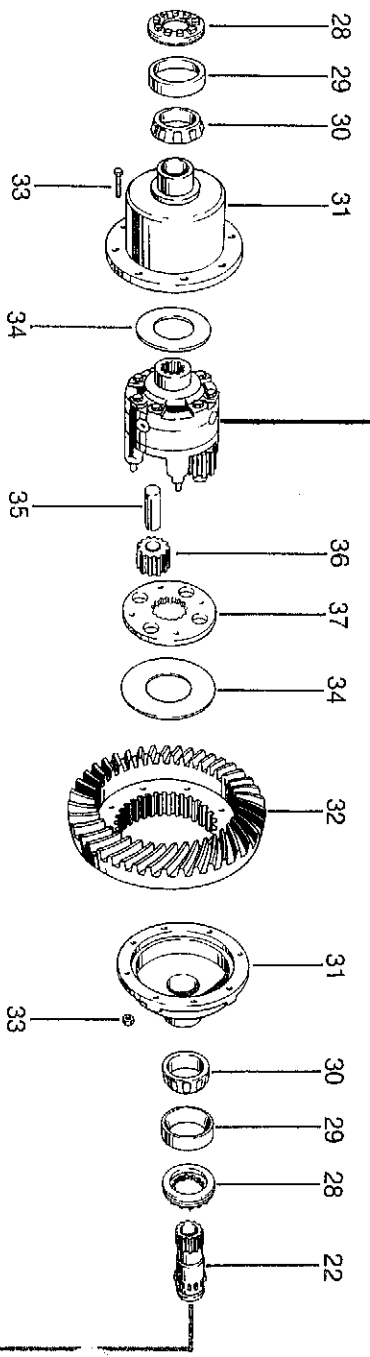
Speedometer Adapters

Eaton Part No.	OEM Part No.
38108	GMC 2307815
38111	IHC 127280-R91
38114	Chrysler 1569161
49156	Ford B9TZ17294A
49156	Chrysler 3879305
50790	Ford B9TF17294E
53405	IHC 127279-R92
53405	Volvo-White V111203
54056	GMC 3854530
59833	GMC 3885433
74081	GMC 3906478
93337	Ford D0HZ17294A
97998	Chrysler 3730434

**Single Axle Differential Carrier
2-Speed
Planetary Double Reduction**



DIFFERENTIAL ASSEMBLY



Item No.	Part Name	Qty	Ref	15201	16244	16201	16202	16221	16321	16322	16323	16324	16325	16326	16327
			ONLY	15201	16244	16201	16202	16221	16321	16322	16323	16324	16325	16326	16327
			AXLE	15301	16344	16344	16344	16344	16344	16344	16344	16344	16344	16344	16344

BASIC OVERHAUL KIT (Contents identified with *) (With #27950 case) (With #103537 case)															
1	Diff. Carrier & Bearing Caps Carrier Casting No. (NSS) 76929 (Includes Items 1-4, 12, 15, 17, 20, 21, 25 and Sealant) 76930 (Includes Items 1-4, 12, 15, 20, 21, 25) 67759 (Includes Items 1-5, 12, 15, 17, 20, 21, 25 and Sealant) 109365 (Includes Items 1-5, 12, 15, 17, 18, 20, 21, 25 and Sealant) 98590 (Includes Items 1-5, 9, 12, 15, 17, 18, 20, 21, 25 and Sealant)	1	110565*	110567*	110585*	110635*	—	110572*	—	110604*	—	—	—	—	—
		1	—	—	—	—	—	—	—	—	—	—	—	—	
		1	76929	76930	67759	109365	98590	98590	98496	98496	98496	98496	98496	98496	
		1	113641	113643	119856	107493	98496	98496	98496	98496	98496	98496	98496	98496	
2	Bearing Cap Screw	4	90036	14970	32732	32732	32732	32732	32732	32732	32732	32732	32732	32732	
3	Flat Washer	4	—	—	32912	32912	32912	32912	32912	32912	32912	32912	32912	32912	
4	Lockwire	2	12563	90536	90538	90538	12563	12563	12563	12563	12563	12563	12563	12563	
5	Dowel Bushing	2	—	—	32730	32730	32730	32730	32730	32730	32730	32730	32730	32730	
6	Bearing Cup Adjuster Lock (RH)	1	90186	13377	13377	13377	14275	14275	14275	14275	14275	14275	14275	14275	
7	Cotter Pin (RH)	1	90873	90873	90873	90873	90876	90876	90876	90876	90876	90876	90876	90876	
8	Bearing Cap Adjuster Lock (LH)	1	10602	14949	37745	37745	78926	78926	78926	78926	78926	78926	78926	78926	
9	Dowel Bushing (LH)	2	—	—	37746	37746	37746	37746	37746	37746	37746	37746	37746	37746	
10	Cap Screw (LH)	2	126076	9820	37747	37747	12562	12562	12562	12562	12562	12562	12562	12562	
11	Lockwire (LH)	2	12563	90533	12563	12563	12563	12563	12563	12563	12563	12563	12563	12563	
12	Upper Expansion Plug Lower Expansion Plug	1 1	9797* 9797*	9797* 9797*	30703* 9797*	30703* 9797*	30703* 9797*	30703* 9797*	30703* 9797*	30703* 9797*	30703* 9797*	30703* 9797*	30703* 9797*	30703* 9797*	
13	Oil Scraper (Not in 110598)	1	67814*	67814*	67814*	—	67814*	—	67814*	—	67814*	—	67814*	—	
14	Scraper Cap Screw (Not in 110598)	2	67815	67815	67815	—	67815	—	67815	—	67815	—	67815	—	
2-SPEED ONLY PARTS															
15	Shift Fork Shaft Assembly 'O' Ring	1	113800 113140	113800 113140	113801 113140	113801 113140	113801 113140	113801 113140	113801 113140	113801 113140	113801 113140	113801 113140	113801 113140	113801 113140	
16	Shift Fork & Roller Assy.	1	32326	32425	32613	32613	32679	32679	32679	32679	32679	32679	32679	32679	
17	Shift Fork Mounting Stud	2	119863	119863	119863	119863	119863	119863	119863	119863	119863	119863	119863	119863	
18	Shift Fork Seal & Spring Assy.	1	119855*	119855*	119855*	119855*	119855*	119855*	119855*	119855*	119855*	119855*	119855*	119855*	
19	Shift Unit Assy. (See page 16-22)	1	—	—	—	—	—	—	—	—	—	—	—	—	
20	Flat Washer	2	119857	119857	119857	119857	119857	119857	119857	119857	119857	119857	119857	119857	
21	Stud Nut	2	63028	63028	63028	63028	63028	63028	63028	63028	63028	63028	63028	63028	
SLIDING CLUTCH SERVICE KIT (Includes Items 22, 28-LH, 34-LH, 37)															
22	Sliding Clutch	1	113599	113629	113596	113596	113596	113596	113596	113596	113596	113596	113596	113596	
PDR ONLY PARTS															
SUN GEAR SERVICE KIT (Includes Items 23-28-LH, 34-LH, 37)															
23	Sun Gear	6	113601	113631	113598	113598	113595	113595	113595	113595	113595	113595	113595	113595	
24	Sun Gear Retainer	1	45615	45325	43178	43178	43178	43178	43178	43178	43178	43178	43178	43178	
25	Shift Fork Opening Cover	1	45521	45521	45521	45521	45521	45521	45521	45521	45521	45521	45521	45521	
26	Stud/Screw	2	20807	20807	20807	119863	20807	20807	20807	20807	20807	20807	20807	20807	
27	Flat Washer	2	90415	90415	90415	119857	90415	90415	90415	90415	90415	90415	90415	90415	
28	Diff. Bearing Adjuster (RH) Diff. Bearing Adjuster (LH)	1 1	10524 74055	110243 74022	110243 56932	110243 56932	21637 56929	21637 56929	21637 56929	21637 56929	21637 56929	21637 56929	21637 56929	21637 56929	
29	Diff. Bearing Cup (RH) Diff. Bearing Cup (LH)	1 1	24328* 9803*	3803* 15092*	9803* 27816*	9803* 27816*	15092* 21632*	15092* 21632*	15092* 21632*	15092* 21632*	15092* 21632*	15092* 21632*	15092* 21632*	15092* 21632*	
30	Diff. Bearing Cone (RH) Diff. Bearing Cone (LH) (W/Support case 103637) (W/S-support case 27950 NOTE 2)	1 1 1 1	24330* 9804*	15094* 27876*	27813* 27817*	27813* 27817*	21635*	21635*	21635*	21635*	21635*	21635*	21635*	21635*	

Item No.	Part Name	Qty	Price	Ext. Price	Unit	Price	Ext. Price	Unit	Price	Ext. Price
31	Gear Support Case (RH) Gear Support Case (LH) (106471 includes 102660 cone)	1	20759	27860	110148	110148	21619	108138	108138	108138
32	RING GEAR & DRIVE PINION SET (NSS) Matched Parts, see separate listing on page 13									
33	RING GEAR BOLT & NUT KIT Bolt Nut Kit 121448 contains 6 each bolts and nuts	1 8 8	121448 44355 60597	121449 44356 60598	87955 44358 60599	87955 44358 60599	87955 44358 60599	87955 44358 60599	87955 44358 60599	87955 44358 60599
34	Gear Support Thrust Washer (RH) Gear Support Thrust Washer (LH)	1	20850*	18346*	27827*	27827*	18198*	83726*	83726*	83726*
35	Idle Pinion Pin	4	20821	14935	27861	27861	27953	106144	106144	106144
36	Idle Pinion	4	74057	27875	27835	27835	27952	27952	27952	27952
37	High-Speed Clutch Plate WHEEL DIFF. CASE KIT (Includes: Items 38-39)	1	74056	74023	56931	56931	56928	56928	56928	56928
38	Diff. Case w/clutch plate pin Diff. Case (LH) Diff. Case (RH)	1	408237	NOTE 1	98182	98182	98183	108146	108146	108146
39	Diff. Case Cap Screw Diff. Case Cap Screw	1 4	71880 109237	NOTE 1 109238	96278 96283	96278 96283	96280 96284	108139 96284	108140 96284	108140 96284
	WHEEL DIFF. KIT (Includes Items 40-44 - Involute side gear)	1	114467	114242	114469	114470	114474	109267	109267	109267
	17 Series	1	---	---	114470	---	---	---	---	---
	18, 21 Series	1	---	---	---	---	---	---	---	---
	WHEEL DIFF. KIT LESS SIDE GEARS (Includes Items 41-44)	1	118746	118747	118748	118748	118750	118751	118751	118751
40	Diff. Side Gear 22 Involute Splines 34 Involute Splines 36 Involute Splines 39 Involute Splines 41 Involute Splines 16 Straight Splines (IHC 15 Series Only) 16 Angular Splines (Chrysler 15 Series Only) 19 Angular Splines (Ford)	2 2 2 2 2 2 2	---	---	---	---	---	---	---	---
41	Side Gear Thrust Washer	2	20850*	18346*	27827*	27827*	18198*	83726*	83726*	83726*
42	Side Pinion	4	102512	102500	104139	104139	96900	108142	108142	108142
43	Side Pinion Thrust Washer	4	25868*	64467*	27810*	27810*	18199*	108145*	108145*	108145*
44	Spider	1	20766	25971	38289	38289	107371	108141	108141	108141
45	Pinion Pilot Bearing	1	13224*	15828*	15828*	15828*	119858*	119858*	119858*	119858*
46	Pinion Bearing Cone (Inner) Pinion Bearing Cone (Outer)	1 1	49848* 49848*	33699* 33699*	12496* 12496*	12496* 12496*	27239* 14218*	27239* 14218*	27239* 14218*	27239* 14218*
47	Flat Washer	1	12904	---	---	---	---	---	---	---
48	Pinion Bearing Spacer (See separate listing on page 7)	AR	---	---	---	---	---	---	---	---
49	Spacer Washer	1	---	---	---	---	31366*	31366*	31366*	31366*
50	Pinion Bearing Cup (Inner) Pinion Bearing Cup (Outer)	1 1	48848* 48848*	12495* 12495*	12495* 12495*	14217* 14217*	27238* 14217*	27238* 14217*	27238* 14217*	27238* 14217*
51	Pinion Bearing Cage & Cup Assy. (Includes Item 50) (Cage 76896) (Cage 75107) 16" Ring Gear (Cage 75109) 16 1/2" Ring Gear (Cage 107495) (Cage 79245)	1 1 1 1 1	78397 ---	---	75110 75110	75108 75110	---	107495 79246	---	79246 79246
52	Dravel Pin	1	60604	---	---	---	---	---	---	---

Item No.	Part Name	PA	PA	PA	PA	PA	PA	PA	PA
		AXLE	AXLE	AXLE	AXLE	AXLE	AXLE	AXLE	AXLE
		15291	16244	16244	21321	22821	26321	35821	
		15301	16344	16344	21321	22821	26321	35821	

OIL SEAL & SHIM KITS
(Includes Items 18, 53, 56)

Item No.	Part Name	PA	PA	PA	PA	PA	PA	PA	PA
		AXLE	AXLE	AXLE	AXLE	AXLE	AXLE	AXLE	AXLE
53	Pinion Bearing Cage Shims	AR							
	.003"	115450	114104	114104	115552	115582	115582	115582	
	.005"	114265							
	.010"								
	.020"								
54	Bearing Cage Cap Screw	6	113325	113325	113325	113325	113327	113327	
55	Lockwasher	6	—	—	—	—	90422	90422	
56	Oil Seal	1	935830*	119427*	119427*	119427*	119432*	119432*	
57	Input Yoke (See OEM Catalog)	1	—	—	—	—	—	—	
58	Pinion Nut	1	95203	95204	—	95206	95262	95262	
	Ratios 3.55-4.33	1	—	—	95206	—	—	—	
	Ratios 4.56-7.17	1	—	—	95205	—	—	—	
59	Flat Washer (With #95206 Nut) (With #95206 Nut)	1	23991*	14354*	—	56864	56864	—	
	Gasket Compound	1	—	—	4327	—	—	—	
		1	107276*	107276*	107276*	107276*	107276*	107276*	

NOTE 1: Wheel Diff. Kit 51559 is no longer available. If the diff. case needs replacement, the entire wheel diff. assembly must be upgraded. Upgrade kits vary by side gear.

Upgrade Kit No.	Side Gear	Vehicle Mfg.
121962	126000 (36 Involute)	Ford, Navistar, GMC
121963	210386 (30 Involute)	Mack, Midliner
121964	210387 (16 Angular)	Ford (before 2-1-86)
121965	210388 (16 Straight)	Navistar, GMC (before 2-1-86)

The above kits contain the side gear specified plus:
 126001 side pinion,
 126002 spider,
 126003 side pinion thrust washer,
 126004 side gear & support case thrust washer,
 126006 diff. case with clutchplate pin,
 126007 diff. case,
 126008 idler pinion pin,
 126009 gear support case,
 126075 cap screw and
 109238 cap screw.

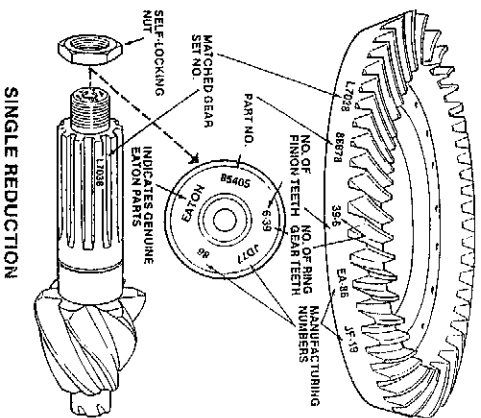
NOTE 2: Earlier models used a 27950 case. This case is no longer available and has been superseded by 103527. However, the 103527 case does not have to be used when converting to the larger differential parts. Continue using the 27950 case and 21633 bearing if serviceable. If the 27950 case is unserviceable, order parts kit 106471. Kit 106471 contains the 103537 case and 102660 bearing, which must be used together.

Ring Gear and Pinion Identification

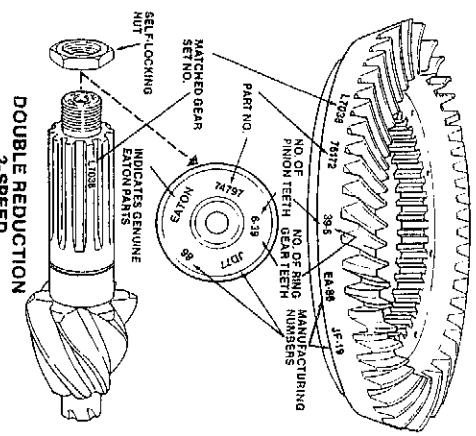
Ring Gear and Drive Pinion are matched parts and must be replaced in sets.

Complete identification is stamped on both parts shown in the adjacent drawing.

Order by Eaton "Set No." which includes drive pinion nut.



TYPICAL GEAR SETS



Gear Set With Nut Single Reduction

Gear Ratio	Gear (NSS)	Pinion (NSS)	Gear Ratio	Gear Set	Gear (NSS)	Pinion (NSS)
------------	------------	--------------	------------	----------	------------	--------------

Model: 17101, 18101 Gear: 16" with 3/4" bolt

3.70	96619	88316 (37T)	53868 (10T)
4.11	96620	88318 (37T)	53875 (9T)
4.33	96621	88320 (39T)	94269 (9T)
4.33	99930	88320 (39T)	47347 (9T)
(service for 1 1/4" dia., pinion spline)			
4.56	96622	88322 (41T)	48437 (9T)
4.88	96623	88324 (39T)	38861 (8T)
5.29	96624	88326 (37T)	62102 (7T)
5.57	96625	88328 (39T)	38863 (7T)

Model: 17121, 18121 Gear: 16 1/2" with 3/4" bolt

5.57	96626	86880 (39T)	79195 (7T)
6.14	96627*	86881 (43T)	66839 (7T)
6.57	113466*	113456 (46T)	113457 (7T)
7.17	119239*	119237 (43T)	119027 (6T)

All gear sets with 1/2" bolts have been superseded to current product 3/4" bolt gear sets. When making replacements, a nut and bolt kit P/N 120780 must be used.

*When replacing 16" gears with 16 1/2" gear sets, cage and cup 75110 is also required.

Model: 21121 Gear: 3.36-3.70 16", others 16 1/2"

3.36	120763	120045 (37T)	120044 (11T)
3.55	111501	109862 (39T)	111466 (11T)
3.70	111502	88013 (37T)	111467 (10T)
3.90	111503	99746 (39T)	111468 (10T)
4.11	111504	86372 (37T)	111469 (9T)
4.33	111505	86374 (39T)	111470 (9T)
4.56	111506	86376 (41T)	111471 (9T)
4.88	111507	86378 (39T)	111472 (8T)
5.29	111508	86380 (37T)	111473 (7T)
5.57	111509	86880 (39T)	111474 (7T)
6.14	111510	88881 (43T)	111475 (7T)
6.50	111511	86882 (39T)	111476 (6T)
7.17	111512	86883 (43T)	111477 (6T)

Model: 22121 Gear: 17"

3.90	107537	107497 (39T)	107517 (10T)
4.11	107538	107498 (37T)	107518 (9T)
4.33	107539	107499 (39T)	107519 (9T)
4.62	107540	107500 (37T)	107520 (8T)
4.88	107541	107501 (39T)	107521 (8T)
5.29	107542	107502 (37T)	107522 (7T)
5.57	107543	107503 (39T)	107523 (7T)
6.17	107544	107504 (37T)	107524 (6T)
6.50	107545	107505 (39T)	107525 (6T)
7.17	107546	107506 (43T)	107526 (6T)

Model: 23121, 26121 (1.8:1 rate) Gear: 18"

3.56	111352	111349 (39T)	111350 (11T)
3.70	98264	88500 (37T)	53166 (10T)
3.90	99899	99896 (39T)	99897 (10T)
4.11	98265	88502 (37T)	53168 (9T)
4.33	98101	52999 (39T)	52913 (9T)
4.56	98102	73312 (41T)	73310 (9T)
4.88	98103	53001 (39T)	52815 (8T)
5.43	98104	53003 (38T)	53170 (7T)
6.17	98105	53005 (37T)	53172 (6T)
6.57	98106	53007 (40T)	53174 (6T)

Gear Set With Nut 2-Speed and Planetary Double Reduction

Gear Ratio	Gear Set	Gear (NSS)	Pinion (NSS)	Gear Ratio	Gear Set	Gear (NSS)	Pinion (NSS)
Model: 15201, 15301							
Gear: 14 1/2"							
4.56/6.34	98754	74044 (41T)	74045 (9T)				
5.14/7.16	98755	74046 (36T)	74047 (7T)				
5.57/7.75	110180	110164 (39T)	110165 (7T)				
5.86/8.15	113450	113444 (41T)	113445 (7T)				
6.29/8.74	113451	113446 (44T)	113447 (7T)				
Model: 16244, 16344							
Gear: 15 1/2"							
4.11/5.72	107947	82622 (37T)	82623 (9T)				
4.56/6.34	96797	83968 (41T)	83517 (9T)				
4.88/6.78	96798	74008 (39T)	74009 (8T)				
5.29/7.36	118928	118925 (37T)	118926 (7T)				
5.57/7.75	96799	74010 (39T)	74011 (7T)				
6.14/8.55	111395	74012 (43T)	74013 (7T)				
6.57/9.14	113455	113452 (46T)	113453 (7T)				
7.17/9.97	96802	74016 (43T)	74017 (6T)				
Model: 17201, 17301, 18201, 18301							
Gear: 16"							
3.70/5.05	96833	53867 (37T)	53868 (10T)				
4.11/5.61	96834	53874 (37T)	53875 (9T)				
4.33/5.91	96835	47346 (39T)	47347 (9T)				
4.56/6.21	96836	48436 (41T)	48437 (9T)				
4.88/6.65	96837	38860 (39T)	38861 (8T)				
5.29/7.21	96838	62101 (37T)	62102 (7T)				
5.57/7.60	96839	38862 (39T)	38863 (7T)				
Model: 17221, 17321, 18221, 18321							
Gear: 16 1/2"							
5.57/7.60	96840	79196 (39T)	79195 (7T)				
6.14/8.38	96841	66850 (43T)	66839 (7T)				
6.57/8.96	113467	113458 (46T)	113457 (7T)				
7.17/9.77	96843	66854 (43T)	66845 (6T)				
Model: 21221, 21321							
Gear: 3.55/4.84-3.70/5.05 16", others 16 1/2"							
3.55/4.84	111513	109864 (39T)	111466 (11T)				
3.70/5.05	111514	53867 (37T)	111467 (10T)				
3.90/5.31	111526	113519 (39T)	111468 (10T)				
4.11/5.61	111515	85110 (37T)	111469 (9T)				
4.33/5.91	111516	85112 (39T)	111470 (9T)				
4.56/6.21	111517	85114 (41T)	111471 (9T)				
4.88/6.65	111518	85116 (39T)	111472 (8T)				
5.29/7.21	111519	85118 (37T)	111473 (7T)				
5.57/7.60	111520	79196 (39T)	111474 (7T)				
6.14/8.38	111521	66850 (43T)	111475 (7T)				
6.50/8.86	111522	66852 (39T)	111476 (6T)				
7.17/9.77	111523	66854 (43T)	111477 (6T)				
Model: 22221, 22321							
Gear: 17"							
3.90/5.32	107557	107507 (39T)	107517 (10T)				
4.11/5.61	107558	107508 (37T)	107518 (9T)				
4.33/5.91	107559	107509 (39T)	107519 (9T)				
4.62/6.31	107560	107510 (37T)	107520 (8T)				
4.88/6.65	107561	107511 (39T)	107521 (8T)				
5.29/7.21	107562	107512 (37T)	107522 (7T)				
5.57/7.60	107563	107513 (39T)	107523 (7T)				
6.17/8.40	107564	107514 (37T)	107524 (6T)				
6.50/8.86	107565	107515 (39T)	107525 (6T)				
7.17/9.77	107566	107516 (43T)	107526 (6T)				
Model: 23221, 23321, 26221, 26321, 35327							
Gear: 18"							
3.70/5.04	98107	53165 (37T)	53166 (10T)				
4.11/5.60	98108	53167 (37T)	53168 (9T)				
4.33/5.90	98109	52812 (39T)	52813 (9T)				
4.56/6.21	98110	73309 (41T)	73310 (9T)				
4.88/6.64	98111	52814 (39T)	52815 (8T)				
5.43/7.39	98112	53169 (38T)	53170 (7T)				
6.17/8.40	98113	53171 (37T)	53172 (6T)				
6.67/9.08	98114	53173 (40T)	53174 (6T)				

Axle Housings

Beginning in June 1984, a new Eaton housing design was phased into current production axles. Eaton will continue to service older style housings until inventories are exhausted. Then service part orders will be filled with the new current service part number.

Check the Housing I.D. number on your metal tag (see drawing). Locate this number in column 1 or 2. Order part numbers in column 3 or 4 only. When older design axle housings are replaced with current parts, the vehicle manufacturer should be contacted to ensure that the proper spring seats and hardware are used.

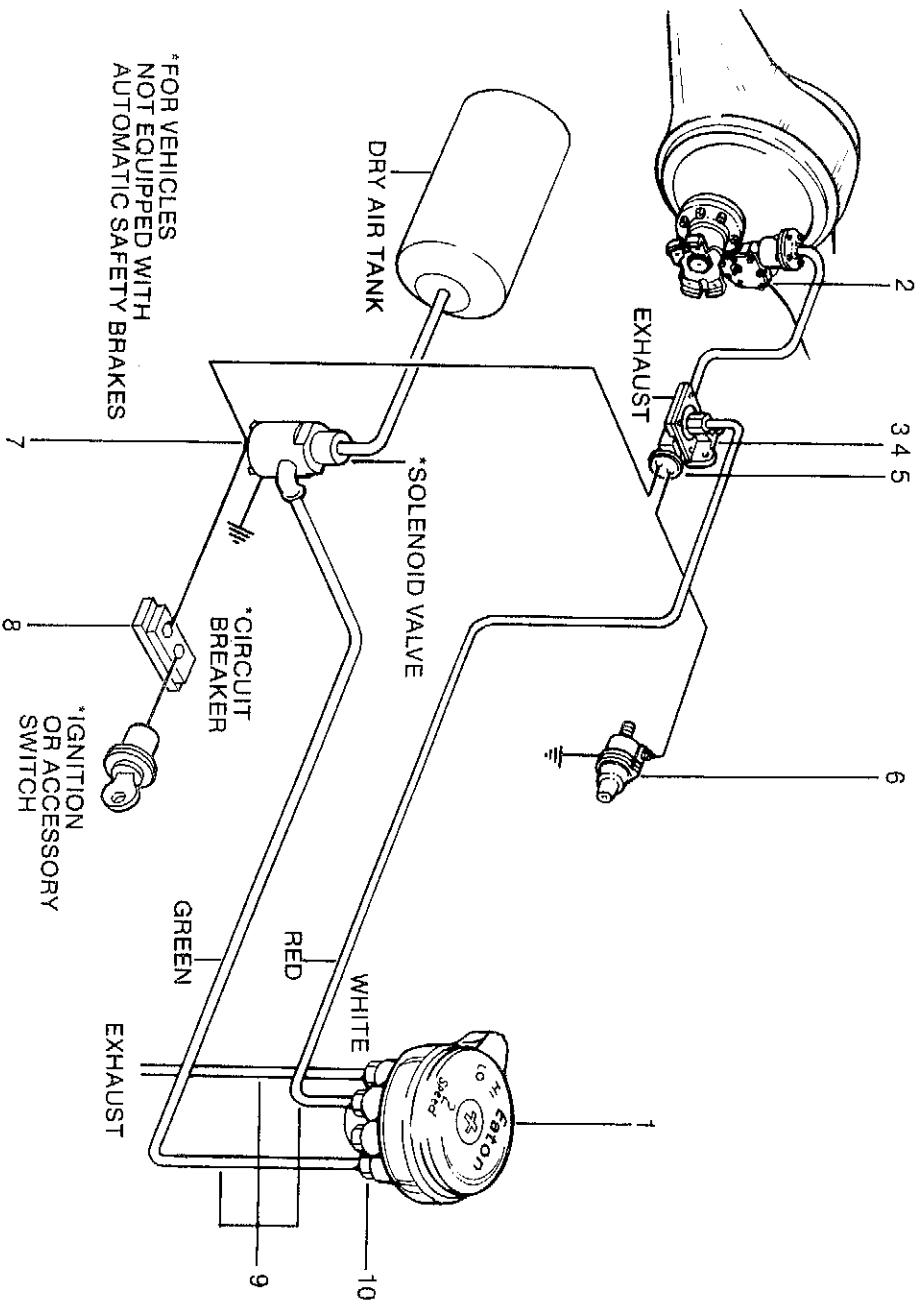


Metal Tag

Axle Series	Current I.D. Tag Number	Old I.D. Tag Number	Old Service Part No.	Current Service Part No.	OEM
15	100973	—	—	120344	Ford
15	303100	100300	109294	120153	Ford
15	303352	301544	119341	120515	Ford
15	100786	—	—	100786	Chrysler
15	100979	—	—	100979	GMC
15	100989	—	—	100989	GMC
15	301639	—	—	301639	IHC
16	303103	100301	107369	120154	Ford
16	303107	301443	113673	120157	Ford
16	303353	301545	119342	120516	Ford
16	100990	—	—	100990	GMC
16	100991	—	—	100991	GMC
16	303104	100791	109087	120156	GMC
16	301640	—	—	301640	IHC
17	303108	100302	100465	120158	Ford
17	303116	301157	119410	120164	Ford
17	303118	301548	119343	120166	Ford
17	303656	301711	301711	303656	Ford
17	303114	100938	100938	303114	Chrysler
17	303109	100303	109089	120159	GMC
17	303110	100356	109090	120160	GMC
17	303115	100962	303115	100962	GMC
17	303117	301452	115830	120165	GMC
17	303113	100642	109092	120163	IHC
17	303648	301641	301641	303648	IHC
17	303650	301710	301710	303650	IHC
17	303111	100387	109091	120161	IHC
18	303131	100513	109101	303131	Volvo-White
18	303127	100305	109098	120177	Chrysler
18	303129	100429	109104	120178	GMC
18	303128	100306	109100	303128	GMC
22	303125	100823	109356	120175	Volvo-White
22	303126	100852	100466	120176	Ford
22	303135	301551	119344	120182	Ford
22	303131	100871	100871	303131	Ford
22	303127	100863	109535	120177	Chrysler
22	303129	100867	109534	120178	GMC
22	303649	301397	301397	303649	GMC
22	303128	100865	—	303128	IHC
22					Volvo-White

Axle Series	Current ID Tag Number	Old ID Tag Number	Old Service Part No.	Current Service Part No.	OEM
23	303140	100311	100467	120190	Ford
23	303146	301457	119305	120198	Ford
23	303136	301618	303618	301136	Mack
23	301362	—	—	301362	GMC
23	301365	—	—	301365	GMC
23	301372	—	—	301372	GMC
23	303138	100309	109106	120187	GMC
23	303147	301521	113805	120199	GMC
23	303143	301114	301114	303143	IHC
23	303144	301115	301115	303144	IHC
23	303137	100308	109109	120184	IHC
23	303148	301530	118772	120200	Peterbilt/Kenworth/ Freightliner
23	303141	100421	109111	120192	Peterbilt/Kenworth/ Freightliner
23	303139	100310	109107	120189	Kenworth
23	303149	301595	—	303149	Volvo-White
26	303153	100357	102354	120217	Ford
26	303155	100426	109117	120219	GMC
26	303158	301633	119522	120210	GMC
26	303157	301446	118547	120209	IHC
26	303154	100399	109116	120218	Peterbilt/Kenworth
26	303152	100313	109115	120216	Volvo-White
26	303156	100824	107336	120208	Volvo-White

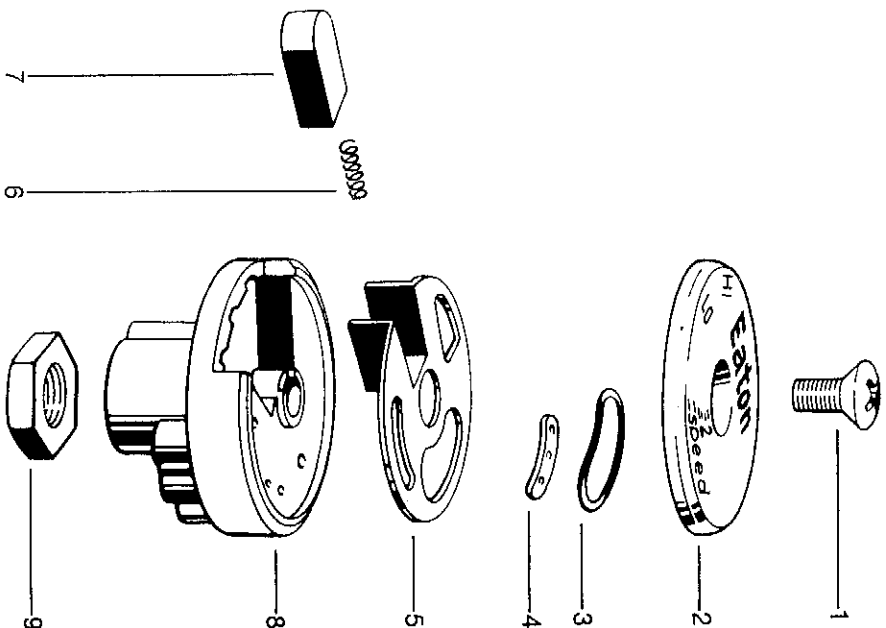
Air Shift System



Item No	Part Name	Qty per Axle	Part No.	Remarks
1	Air Shifter Valve			See page 17
2	Piston Air Shift Unit	1	73507	See pages 18
3	Quick Release Valve	2	66468	
4	Elbow Tube Connector	2	66476	In Quick Release Valve
5	Speedometer Adapter Pressure Switch	1	56071	Normally Closed Type
6	Speedometer Adapter	1		Note 1
7	Solenoid Valve	1		Refer to OEM Catalog
8	Circuit Breaker	1		Refer to OEM Catalog
9	Tubing & Related Parts	A/R		
	Green		66478	Supply
	Red		66478	To Quick Release Valve
	White		66475	Exhaust
	Loam		66478	
	Loam Clip		66478	
10	Connector	4	66471	

*Note 1: Varies with OEM and application.

Air Shifter Valve



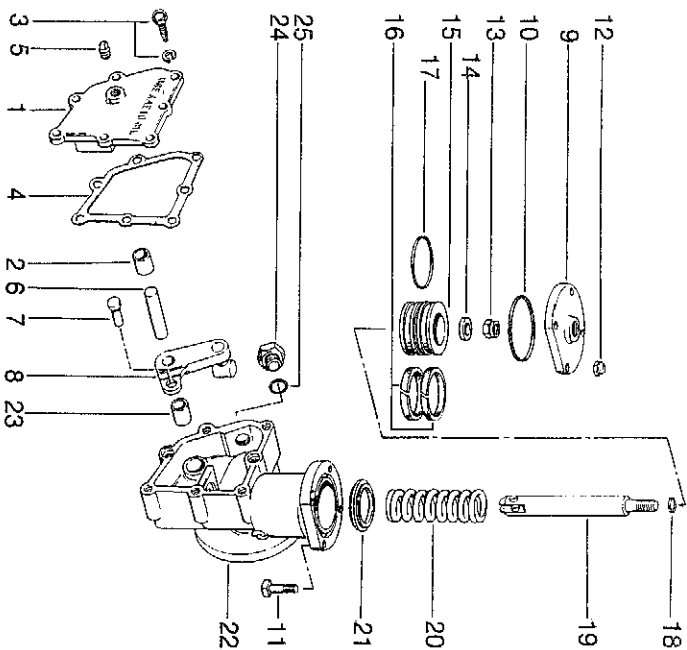
Item No	Part Name	Qty Per Axle	Part No	Remarks
Air Shifter Valve Assy (Varies with Lever Size)				
1	Cover Screw	1	66459	
2	Cover	1	70740	
AIR VALVE REPAIR KIT				
3	"O" Ring	1	66455	
4	"O" Ring Guide	1	66454	
5	Shifter Plate	1	74860	
6	Spring	1	74861	
7	Shifter Knob (Valve Lock)	1	74863	
8	Housing (Varies with Lever Size)	1	74868 74869 74870 74871	Lever Size ... (5/8"-11) (1/2"-20) (1/2"-13) (3/8"-24)
9	Jam Nut	1	56286 59600 56287 56526	(5/8"-11) (1/2"-20) (1/2"-13) (3/8"-24)

Lever Size...

(5/8"-11)
(1/2"-20)
(1/2"-13)
(3/8"-24)

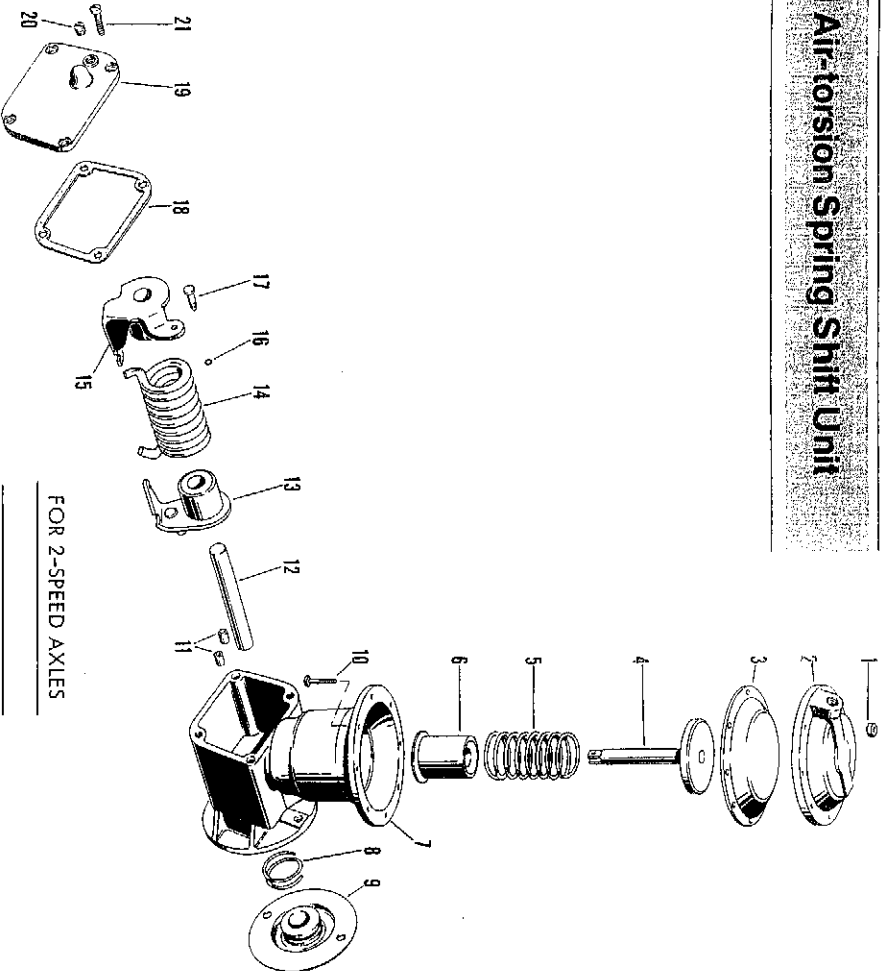
Includes Items 3-7

Piston Air Shift Unit



Item No	Part Name	Qty per Axle	Part No.	Remarks
1	Piston Air Shift Unit Assy (Electric Over Air or Straight Air) (Includes Items 1-23)	1	73507	
2	Cover Assy. (Includes Item 2)	1	73487	
3	Cover Bearing	1	73481	
4	Self-Tapping Screw & Washer Assy.	7	88053	
5	Cover Gasket	1	73488	
6	Cover Plug	1	28325	
7	Actuating Lever Pin	1	73456	
8	Clevis Pin	1	73498	
9	Actuating Lever, Pin & Block Assy.	1	84804	
10	Shift Housing Cover	1	73490	
11	Seal Ring	1	73492	
12	Cover Bolt	4	73491	
13	Lock Nut	4	47641	
14	Lock Nut	1	73496	
15	Washer	1	11406	
16	Piston	1	73493	
17	Felt Piston Oiler (strip)	2	06916	
18	Piston "O" Ring	1	32832	
19	Grommet	1	32826	
20	Push Rod	1	73497	
21	Compression Spring	1	73494	
22	Piston Stop	1	73495	
23	Housing Assy. (Including Items 5 & 23)	1	32423	
24	Housing Bearing	1	73481	
25	Cap Screw	1	32303	
26	O-Ring	1	68559	

2-Speed Air-torsion Spring Shift Unit



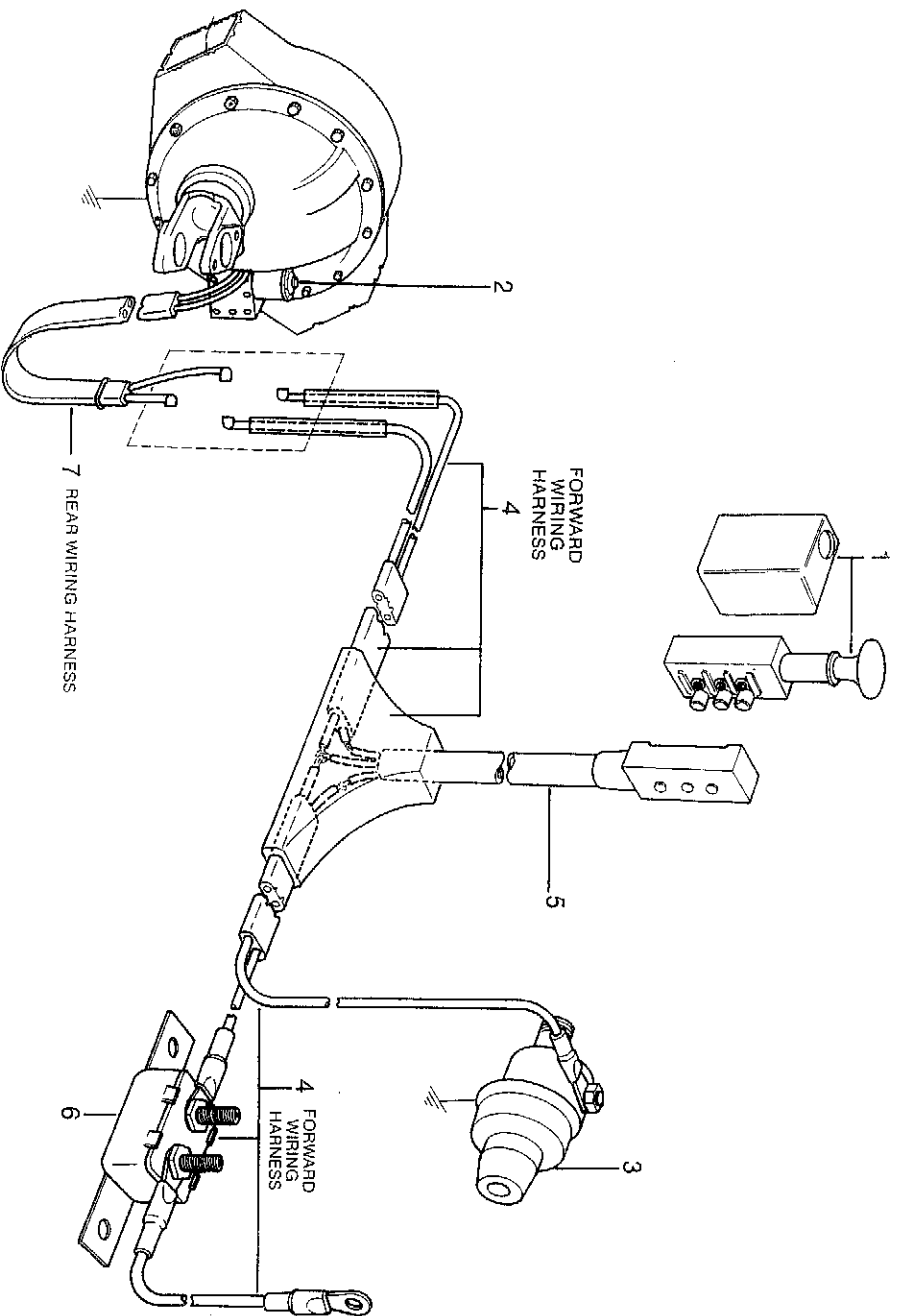
FOR 2-SPEED AXLES	
13800	16200
17200	18200
19200	20200
19500	20500
19800	20800

Item No.	DESCRIPTION	Qty	25°	40°
1	Air Torsion Spring Shift Unit Assembly	1	47654	58298
2	Lock Nut	8	47641	47641
3	Diaphragm Cover	1	47639	47639
4	Diaphragm	1	47638	47638
5	Push Rod	1	47629	47629
	Compression Spring	1	47630	47630
6	Push Rod Stop	1	47631	47631
7	Shift Unit Housing	1	47628	58299
8	Shift Fork Seal Spring (Order Item 9)	1	119855	119855
9	Shift Fork Seal and Spring	1	49973	49973
10	Screw	8	47652	47652
11	Dowel Bushing	2	47652	47652
	Shift Fork Actuating Lever and Spring Winding Lever Assembly with Torsion Spring and Lever Shaft	1	---	82671*
	(Includes Item 12 thru 15)			
12	Lever Shaft	1	32406	32406
13	Shift Fork Actuating Lever Assembly	1	32371	---
			---	32371*
14	Torsion Springs	1	32605	74089
			---	32605*
15	Spring Winding Lever Assembly	1	47646	---
			---	---
16	"O" Rings	1	48931	48931
17	Pin and "O" Ring	1	48932	48932
18	Housing Cover Gasket	1	47651	47651
19	Housing Cover	1	47650	47650
20	Oil Level Plug	1	28325	28325
21	Screw	2	42569	62569

* These parts, of original design, will not interchange with their corresponding new parts. When ordering replacement parts for any or all of these part numbers, order assembly Part Number 82571.

† In some note above applies except use Part Number 82665.

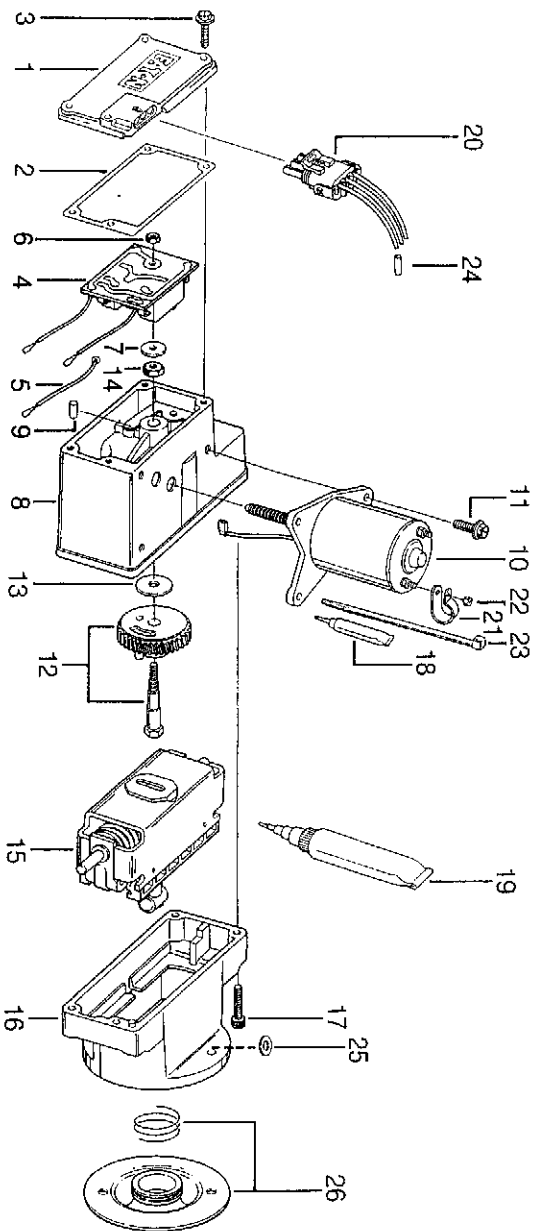
Electric Shift System



Item No.	Part Name	Qty. Per Axle	Part No.	Remarks
1	Electric Shift Switch	1	32861	
2	Electric Shift Unit Assy.	1	113770	
3	Speedometer Adapter	1		Note 1
4	Forward Wiring Harness	1		Varies in length
5	Plug and Cable (3-wire to shift Switch) (Includes Connector Terminals at Switch)	1	42401 49810	11" long 20" long
6	Circuit Breaker	1		See OEM Catalog
7	Rear Wiring Harness (2-wire) *Last 3 digits in Part No. equals length. 25" Harness is 36025 30" Harness is 36030 35" Harness is 36035 Up to 280" Harness is 36280	1	36000"	Varies in length Available from 25" to 280" in increments of 5".

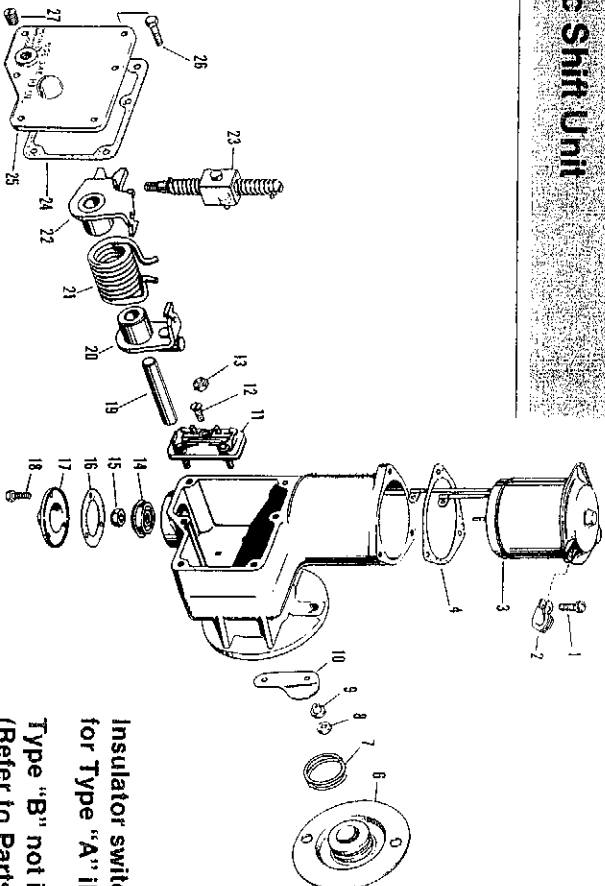
Note 1: Varies with OEM and application. See interchange chart on selected adapters on page 7.

Electric Shift Unit



Item No	Part Name	Qty Per Axle	Part No.	Remarks
	Electric Shift Unit Assembly	1	113770	
	Includes Items 1-19			
	Electric Shift Unit Kit	1	113743	Retrofit Kit to service prior design level shift units
	Includes Items 1-26			
1	Cover Kit	1	121396	Includes Cover & 2, 19
2	Cover Gasket	1	113764	
3	Cover Hex Head Screw	4	113726	
4	CIRCUIT BOARD ASSY., WASHER & LOCKNUT KIT	1	113744	Includes Items 5-7
5	Ground Wire		113775	
6	Circuit Board Locknut	1	113772	NSS
7	Circuit Board Washer	1	113773	NSS
8	Motor Housing & Switch Spring Assy	1	113742	
9	Cam Pin	2	113721	
10	MOTOR & LUBRICANT KIT	1	113745	Includes Item 18
11	Hex Head Screw	3	113727	
12	GEAR ASSEMBLY, SHAFT, LOCKNUT, WASHER, CIRCUIT BOARD LOCKNUT, WASHER, CAM PIN & LUBRICANT KIT	1	113746	Includes Items 6, 7, 9, 13, 14, 18 & Shaft 113756
13	Gear Washer	1	113774	NSS
14	Gear Locknut	1	113729	NSS
15	Slider Block & Shaft Assembly	1	113759	Includes Shaft 113708
16	Base Housing	1	113701	
17	Hex Socket Head Screw	4	113725	
18	Lubricant	AR	113741	
19	Gasket Compound	AR	113771	
	CONNECTOR & HARNESS ASSEMBLY KIT	1	113793	Includes Items 20-26
20	Connector & Harness Assembly Kit	1	113738	NSS
21	Cable Clip	1	113747	NSS
22	Nut (10-24)	1	113748	NSS
23	Tie Wrap (nylon)	2	113749	NSS
24	Wires Connector	3	113799	NSS
25	Flat Washer	2	119857	
26	Seal & Spring Assembly	1	119856	

2-Speed Electric Shift Unit



Insulator switch design
for Type "A" illustrated
Type "B" not illustrated
(Refer to Parts List)

EATON AXLE MODELS

Item No.	DESCRIPTION	Qty	
		Series	Series
		1350	17000
		thru	thru
		16000	20000
		Series	Series

Item No.	DESCRIPTION	Qty	Series	Series
Electric Shift Unit Assembly				
1	Replacement Unit 12 Volt	1	113743	113743
	Screw (Nyllok, for topped hsg)	3	42568	42568
	Screw (self-tapping)	3	84390	84390
2	Motor Cable-Clip	2	32410	32410
3	Motor Assembly 12 Volt	1	40635	40635
4	Motor Gasket	1	40639	40639
5	Shift Unit Housing Type A	1	85755	85755
 Type B	1	86244	86244
6	Shift Fork Seal and Spring (Order item 6)	1	119855	119855
7	Seal Spring	2	32399	32399
8	Lock Nut (Outside) Type A	2	52504	52504
9	Insulator Bushing Type B	2	66577	66577
10	Insulator Type A	1	38315	38315
 Type B	1	---	---
11	Automatic Switch (Includes terminal screws and base gasket) Type A	1	113610	113610
 Type B	1	113611	113611
12	Screw	1	42572	42572
13	Terminal Lock Nut (inside)	2	32674	32674
14	Drive Screw Bearing	1	32401	32401
15	Lock Nut	1	32402	32402
16	Bearing Cover Gasket	1	32404	32404
17	Bearing Cover	1	32403	32403
18	Screw (Nyllok, for topped hsg)	3	42568	42568
	Screw (self-tapping)	3	84390	84390
19	Lever Shaft	1	32406	32406
	Spring Winding and Actuating Levers, and Torsion Spring Assembly, (Includes item 20 thru 22)	1	32771	32772
20	Shift Fork Actuating Lever Assembly	1	32371	32371
21	Torsion Spring	1	32405	32605
22	Spring Winding Lever Assembly	1	32377	32377
23	Drive Screw Assembly	1	32364	32364
24	Housing Cover Gasket	1	85752	85752
25	Housing Cover	1		
26	Screw (Nyllok, for topped hsg)	6	42568	42568
	Screw (self-tapping)	6	84390	84390
27	Cover Pipe Plug	1	28325	28325
28	Rubber Washer	1		
29	Housing Insert	1		
	Washer, Spring to Housing Cover (Not illustrated)	1		

Eaton® Axles and Brakes... Backup by Eaton's unique RoadrangerSM Service Support.

When you spec Eaton, you automatically receive help from the largest field service network in the industry. You can call on our factory-trained experts for everything from specifying advice to parts expediting to

on-the-spot troubleshooting, and you get this help whether you're a fleet or just a one truck owner. If you should ever have any questions involving any Eaton axle or brake, the answer comes easy. "Ask an

Eaton® Roadranger.SM
Call the nearest Eaton Truck Components Regional Office or write the Eaton Field Service Department (address below).

Eaton Truck Components Regional Offices:

Western Region:
Oakland, CA

(415) 487-8880

Northeast Region:
Allentown, PA

(215) 395-1212

Southeast Region:
Charlotte, NC

(704) 372-5840

Midwest Region:
Dallas, TX

(214) 242-8615

Great Lakes Region:
Kalamazoo, MI

(616) 342-3680

Canadian Region:
Toronto, Ontario

(416) 678-2751

Calgary, Alberta
(403) 250-2942

For further assistance...

**Ask an Eaton[®]
RoadrangerSM**

For toll-free specing or service assistance call:

1-800-TCM-HELP

(USA)

1-800-387-3935

(Canada)



Eaton Corporation
Axle & Brake Division
P.O. Box 4008
Kalamazoo, Michigan 49003

EATON