

# Heavy-Duty Clutch Selector

**1** Self-adjusting clutches are recommended for trucks with hydraulic linkage to reduce the risk of drivetrain damage.

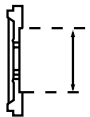
	Spline Dia. – No. of Splines	Flywheel Bore Opening	No. of Springs / Damper Type	Clutch Torque lb-ft (must equal or exceed engine torque)	Facing	Best		Better		Good				
						Solo Advantage® Self Adjust	Easy Pedal Advantage® Manual Adjust	EverTough® Self Adjust	EverTough Manual Adjust	Remanufactured		ValueLine™		
						Original Equipment Specifications (Pre-damper suffix in parentheses)		Aftermarket Specifications		Solo®	Easy Pedal®	ValueClutch®		
<b>15.5 inch</b>	2" – 10	7"	8	1070	Organic							107091-83B		
				1250	Organic							107091-77B		
				1400	4			108391-81AM		108391-81MO	107091-81B			
					Organic					108391-82MO				
				1650	4			108391-74AM	109700-74MO	108391-74MO	107091-74B			
				1760	4	209701-51	208925-51	109701-51AM		108391-74MO	107935-51B			
		8.5"	10	9 (Mack and Volvo 11L & 13L)	1760	4	209701-61	208925-61		108935-61AM	109700-61MO	108935-61MO	108935-61MO	
					1650	6	209701-91	208925-91		108935-91AM	109700-61MO	108935-91MO		
					1760	6	209701-92	208925-92	109701-92AM					
					1700	4	209701-14	208925-14						
					1450	4	209701-80	208925-80						
					1650	4	209701-87	208925-87						
	10"	7 / OVC	7	1650	4	209701-88	208925-88							
				1700	4	209701-82	208925-82	109701-82AM	108925-82AM	109700-82MO	108935-82MO	107925-82		
					6	209701-85	208925-85							
				1750	4	209701-24 (-34)	208925-24 (-34)							
				1760	6	(209701-29)	208925-19 (-29)							
				1860	6	209701-20 (-30)	208925-20 (-30)			109700-20MO				
2" – 14	10"	7 / VCT Plus®	1860	6			109701-20AM	108925-20AM						
			2050	6			109701-25AM	108925-25AM						
			2050	6	209701-25 (-35)	208925-25 (-35)								
			2250	6	209708-32 (-42)	208937-32 (-42)								
<b>14 inch</b>	2" – 10	7"	8	1000	3			108034-61B			108034-61MO	107034-61B		
					Organic						107034-57B			
				1150	Organic			108034-82B			108034-82MO			
				1400	4			108050-59B		108050-59AM	108050-59MO	107050-59B		

**2**

Choose size of your cast two-plate heavy-duty clutch. **Note: All spline diameters are 2".**

**3**

Determine flywheel bore opening and select number of springs.



**4**

Choose clutch torque. Rating in chart must be equal to or exceed engine torque rating.

**5**

Narrow clutch choice based on options. All part numbers in row meet your specs.

**6**

Choose from new or remanufactured.

**Advantage Series**

- Original equipment specification
- 2 year/unlimited mileage warranty
- 50,000 mile lube interval

**EverTough**

- Aftermarket specification
- 1 year/unlimited mileage warranty
- 25,000 mile lube interval

**Remanufactured**

- Economy
- 1 year/unlimited mileage warranty
- Longer service life compared to rebuilt
- Dual zerk

**ValueLine**

- Economy
- 1 year/unlimited mileage warranty
- All new components
- Dual zerk

Clutch Torque lb-ft (must equal or exceed engine torque)	Eaton Clutch for Automated Transmission	
	Part No.	Product
1750	121000-1	Heavy-duty DM Clutch
1850	122002-35A	Heavy-duty ECA Clutch and LCIB
1650	104460-1	430mm Clutch
1850	104461-1	430mm Clutch

Estimated shipping weights: 15.5" = 150 lbs, 14" = 110 lbs

Please refer to the Roadranger Warranty Guide TCWY0900 for the latest warranty time and miles offering.



BACKED BY  
**Roadranger**  
SUPPORT

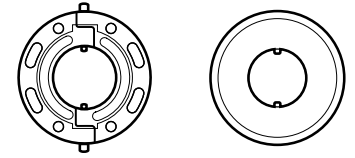
# Eaton® Heavy-Duty Clutch Installation Kits

When a transmission is pulled for a clutch replacement, why not replace the other clutch-related wear components with an Eaton Clutch Installation Kit? It has all the parts and instructions you need for longer clutch life, smoother shifts and less wear on your transmission.



APPLICATION	KIT #	INCLUDES INPUT SHAFT #
RT Series	K-2468	23566
RT Series with Mack® style Pilot Bearing	K-3599	23566
RT Series – Severe Duty (designed for PTO applications)	K-3762	23566
RT Series with 14 Spline Input Shaft	K-3768	4304841
RT Series with Hydraulic Clutch Release	K-4125	23566
RT Series w/ 1.75" input shaft	K-4264	S-2928
FR Series	K-3600	4304633
FR Series with Mack® style Pilot Bearing	K-3601	4304633
FR Series with Original Design (4302315) Input Shaft	K-3602	4302315
FR Series with Hydraulic Clutch Release	K-4124	4304633
FR Series w/ 1.75" input shaft	K-4263	S-2790
FRLO (Lightning) Series	K-3764	4305624
All UltraShift PLUS	K-4145	4308011

## Heavy-Duty Clutch Brakes



Kwik-Konnect® Torque Limiting

SPLINE	DESCRIPTION	PART#
1.75" - 10	Torque Limiting	127740
2" - 10	Kwik-Konnect	127200
	Torque Limiting	127760

## Eaton Medium-Duty Clutch Selector

1 Choose linkage stroke. Refer to OEM for Stroke/Bearing Travel Capabilities: Application Guide Eaton CLSL1276.

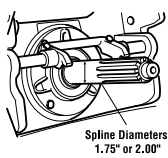
	Spline Dia. – No. of Splines	No. of Discs	Damper Type	Clutch Torque lb-ft (must equal or exceed engine torque)	Facing	New		Remanufactured	
						Solo®	Manual Adjustment	Solo	Manual Adjustment
Standard Stroke 500" to 560" Bearing Travel	1.75" – 10	1	8 / Free Travel	620	3SB	109400-5	107683-5	109400-5MO	107683-5MO
	1.75" – 10	2**	7 + 1	800	Organic				107237-16MO
			7 + 1	860	3 Trap	109500-10	107237-10	109500-10MO	107237-10MO
			7 + 1	860	3SB	109500-22*	107237-22*	109500-22MO*	
	2.0" – 10	2**	7 + 1	860	3SB	109504-12	107342-12		
			7 + 1	1000	4SB	109504-24	107342-24	109504-24MO	
			8	1150	4SB	109504-26	107342-26		
Short Stroke 410" to 470" Bearing Travel	1.75" – 10	1	8 / Free Travel	620	3SB	109404-5		109404-5MO	
	1.75" – 10	2**	7 + 1	860	3 Trap	109503-10		109503-10MO	

Please refer to the Roadranger Warranty Guide TCWY0900 for the latest warranty time and miles offering.

\* **Severe Service:** A combination of higher plate load, super buttons, or an additional number of facings. United States and Canada only.

\*\* **Two Plate Clutches:** Fits in place of single plate (pull type), however, this increases inertia to the transmission and may affect shiftability and longevity.

2 Choose spline diameter size and number of discs.



4 Choose clutch torque. Rating in chart must be equal to or exceed engine torque rating.

5 Choose clutch choice based on options. All part numbers in row meet your specs.

6 Choose from new or remanufactured.

- |  |  |
|--|--|
| <b>New</b>   | <b>Remanufactured</b>  |
| <ul style="list-style-type: none"> <li>• Longer service life</li> <li>• Less downtime</li> </ul> | <ul style="list-style-type: none"> <li>• Economy</li> <li>• Longer service life compared to rebuilt</li> </ul> |

3 Choose damper type.



3 Super Button (3 SB)



4 Super Button (4 SB)



3 Trap



6 Super Button (6SB)

7+1 Damper – designed to quiet idle rattle

BACKED BY  
**Roadranger**  
SUPPORT

For spec'ing or service assistance,  
call 1-800-826-HELP (4357) or visit  
[www.eaton.com/roadranger](http://www.eaton.com/roadranger).  
In Mexico, call 001-800-826-4357.

Roadranger: Eaton and trusted partners providing the best products and services in the industry, ensuring more time on the road.

Eaton  
Vehicle Group  
13100 E. Michigan Ave.  
Galesburg, MI 49053 USA  
800-826-HELP (4357)  
[www.eaton.com/roadranger](http://www.eaton.com/roadranger)

© 2016 Eaton  
All Rights Reserved.  
Printed in USA.  
CLSL1511 0216

**Note:** Features and specifications listed in this document are subject to change without notice and represent the maximum capabilities of the software and products with all options installed. Although every attempt has been made to ensure the accuracy of information contained within, Eaton makes no representation about the completeness, correctness or accuracy and assumes no responsibility for any errors or omissions. Features and functionality may vary depending on selected options.

Eaton, Fuller, Roadranger, Solo, UltraShift and Fuller Advantage are registered trademarks of Eaton. All trademarks, logos and copyrights are those of their respective owners.