

# Lipe Clutch Installation Guide



SETCO AUTOMOTIVE

TS-16949 CERTIFIED



**Canada-Wide**  
Parts Distributors Ltd. ®

[www.canadawideparts.com](http://www.canadawideparts.com)

**EDMONTON**

Toll-Free: 1-800-665-7671

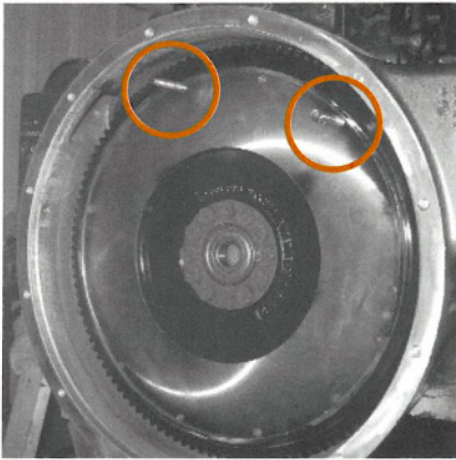
**SURREY**

Toll-Free: 1-877-560-0287

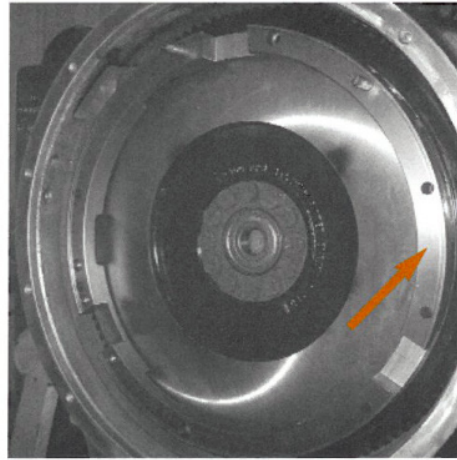
**MISSISSAUGA**

Toll-Free: 1-877-564-3116

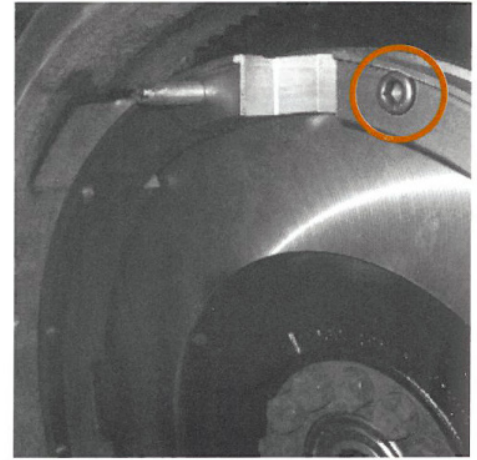




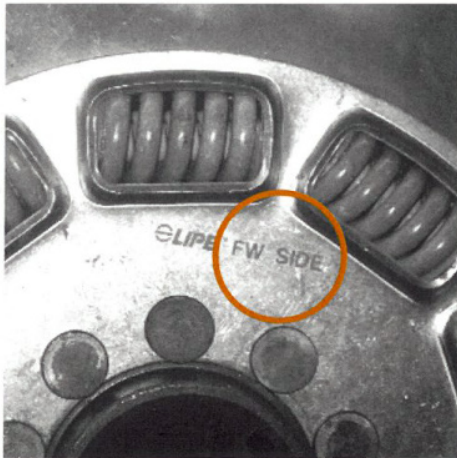
**1** Make sure flywheel and spigot bearing are in good condition. Install two guide studs into clutch flywheel mounting bolt holes.



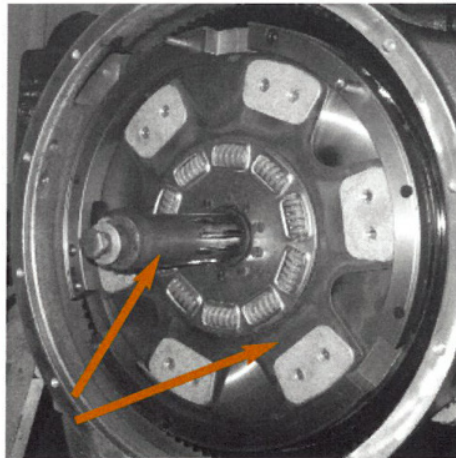
**2** Install intermediate ring onto guide studs making sure it's the correct way.



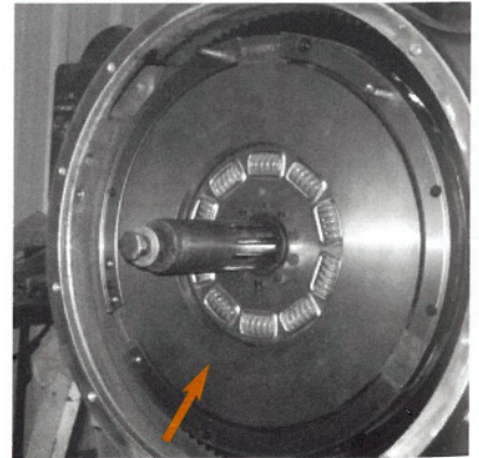
**3** Insert two socket screws into the intermediate ring and torque 20-30lbs.



**4** Examine flywheel disc and note 'FW' (flywheel) goes against the flywheel.



**5** Insert alignment shaft and install flywheel disc (FW) against flywheel through the alignment shaft.



**6** Install the intermediate plate in the intermediate ring making sure intermediate plate markings are followed. Make sure the intermediate plate moves freely and the clearance between the intermediate ring drive slots are checked. A clearance of .003" to .007" is required on each side of drive lug.



**Canada-Wide**  
Parts Distributors Ltd. ®

[www.canadawideparts.com](http://www.canadawideparts.com)

**EDMONTON**

Toll-Free: 1-800-665-7671

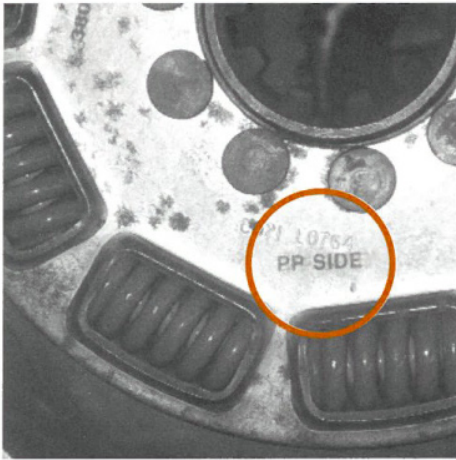
**SURREY**

Toll-Free: 1-877-560-0287

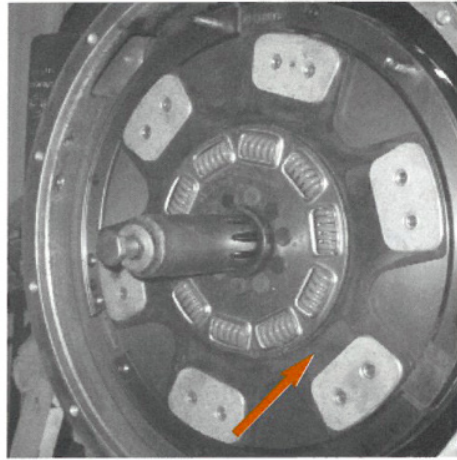
**MISSISSAUGA**

Toll-Free: 1-877-564-3116

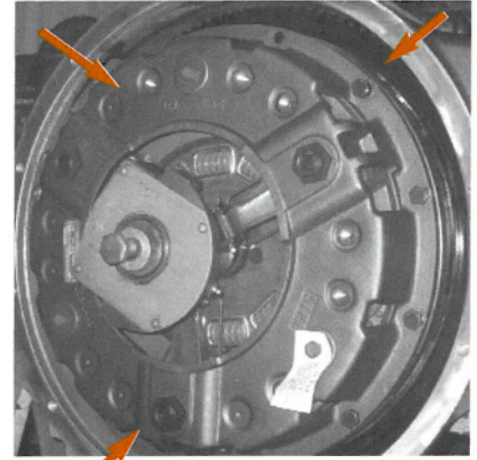




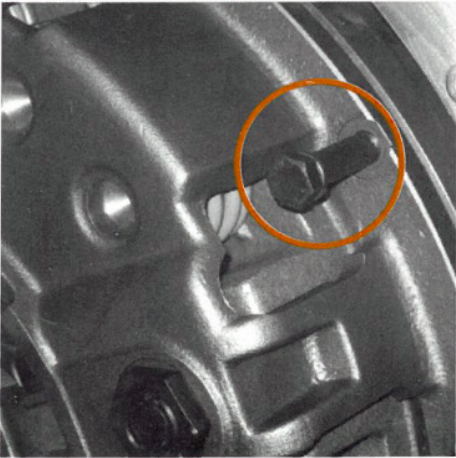
**7** Check pressure plate disc (PP) for correct markings.



**8** Install (PP) pressure plate disc against intermediate plate face through alignment shaft.



**9** Next lift cover assembly and install onto alignment shaft, making sure the three recesses in cover assembly align with intermediate plate lugs.



**10** Insert clutch mounting bolts into cover assembly, remove the two alignment pins and replace with mounting bolts. Torque to 50 to 55lbs in a criss-cross manner.



**11** Remove shipping bolts, making sure alignment tool is still in place.



**Canada-Wide**  
Parts Distributors Ltd. ®

[www.canadawideparts.com](http://www.canadawideparts.com)

**EDMONTON**

Toll-Free: 1-800-665-7671

**SURREY**

Toll-Free: 1-877-560-0287

**MISSISSAUGA**

Toll-Free: 1-877-564-3116





## SETCO AUTOMOTIVE

TS-16949 CERTIFIED

Setco manufactures and sells clutches under the Setco Lipe brand for CVs ranging from 10"/225mm to 17"/430mm. They are ceramic and organic, pull and push, diaphragm and coil with numerous variations to suit customer needs globally. We currently manufacture more than 500,000 clutches per year.

Setco has a R&D base in the United Kingdom, the home of Lipe where design and validation of clutches is done. Setco can offer the entire spectrum of clutches of a high quality at a globally competitive price.

Setco understands that the automotive industry is the most dynamic industry where costs are continuously

pressurized through customer demand and a high level of globalization. It also demands constant innovation coupled with continuous research and development. Setco believes in partnering with the end users and vehicles manufacturers to provide them with value added solutions and services on a global scale.

Our strengths are our People, Design, Service and Prices. Setco has an international business of clutches and precision engineering components which are marketed in Australia, China, India, Middle East, North America, Russia, UK & Europe. We have three manufacturing and distribution bases – India, North America and the UK, with our corporate base in Mumbai.

### Setco Automotive (NA) Inc.

#### North American Headquarters:

565 Hwy 77, Paris, TN 38242

Tel: (731) 642-4215 Ext. 2221

Fax: (731) 642-3546

Toll Free: (877) 642-2419

Sales: [salesna@setcoauto.com](mailto:salesna@setcoauto.com)

[www.setcoauto.com](http://www.setcoauto.com)



**Canada-Wide  
Parts Distributors Ltd. ®**

[www.canadawideparts.com](http://www.canadawideparts.com)

#### EDMONTON

Toll-Free: 1-800-665-7671

#### SURREY

Toll-Free: 1-877-560-0287

#### MISSISSAUGA

Toll-Free: 1-877-564-3116