

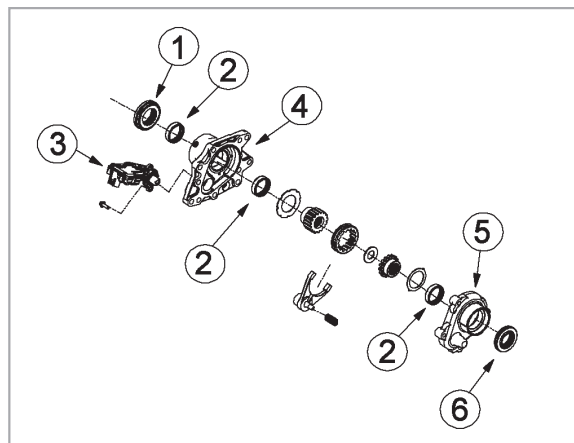
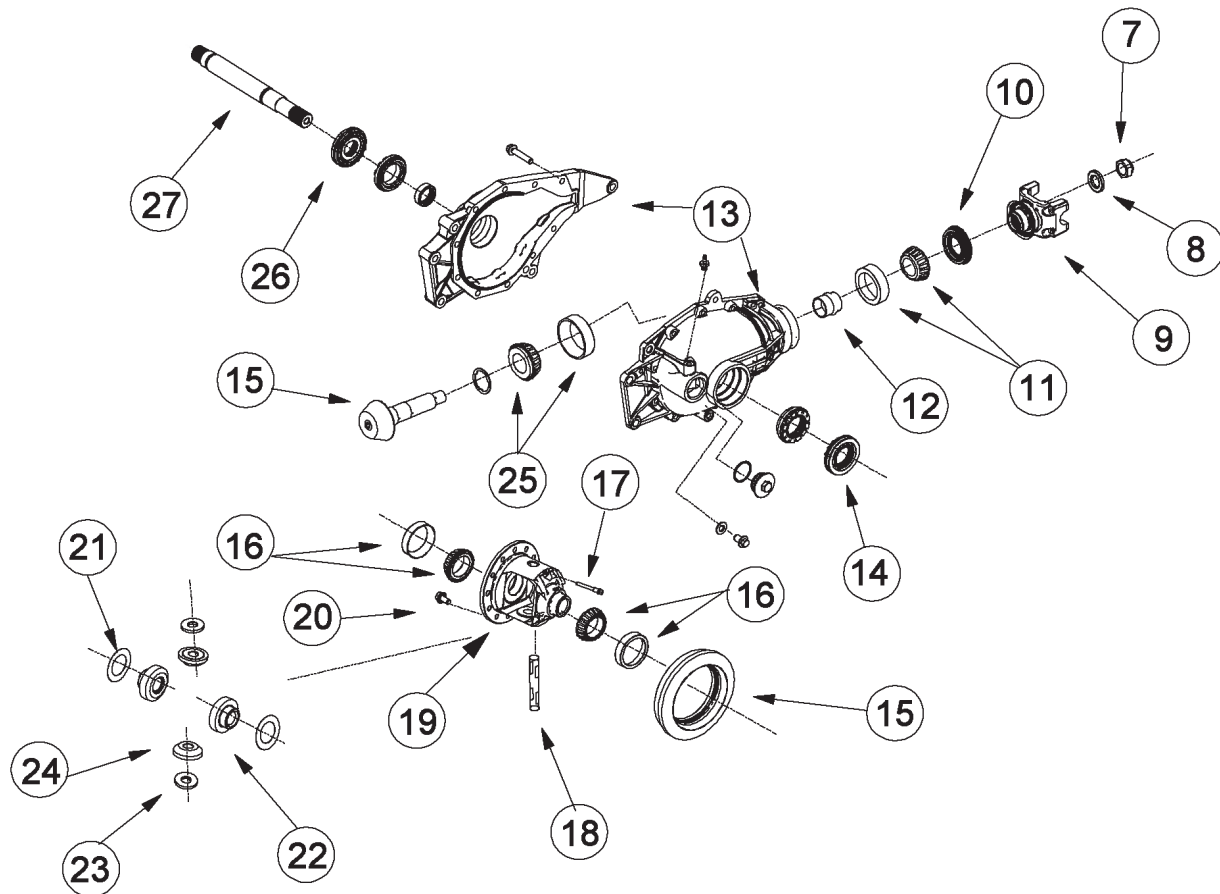


# Demand the original.

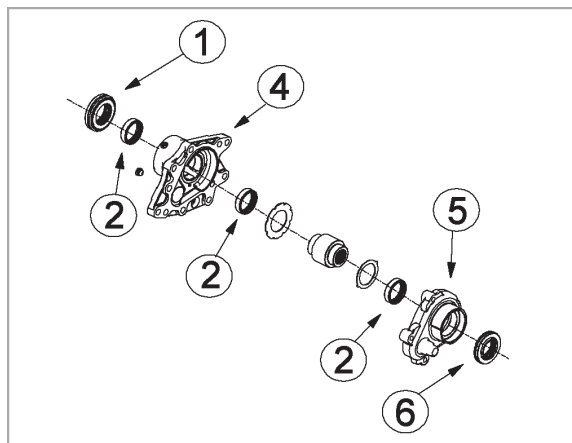
Axle Components | Driveshaft Components | Repair Kits

## AAM 7.25" IOP Clamshell

## GM 7.25" Front Axle



4WD



AWD

### VEHICLE REFERENCE GUIDE

S, T	TRUCK - GMT360, GMT370
G	VAN - FULL-SIZE VAN (ALSO GMT-600), EXPRESS/SAVANA



ILL #	AAM PART NUMBER	OE PART NUMBER	DESCRIPTION	REQ	USAGE	MODEL YEAR
1	40024349	12479302	DISCONNECT SEAL	1	4WD&AWD	2001+
2	74003326	26053326	ROLLER BEARING ASM	3	4WD&AWD	2001+
3	46003022	12471631	ACTUATOR	1	4WD	2001+
4	46004105	12479081	RH DISCONNECT HOUSING	1	4WD	2001+
4	46004107	12479197	DISCONNECT HOUSING RH - MACH AWD	1	4WD	2003+
5	46003103	12471633	LH DISCONNECT HOUSING	1	4WD&AWD	2001+
6	40038875	15801507	OUTPUT SEAL	1	4WD&AWD	2001+
7	74003762	9783762	PREVAILING TORQUE PINION NUT	1	4WD&AWD	2001+
8	74007900	517900	PINION NUT WASHER	1	4WD&AWD	2001+
9	14039582		PINION YOKE (1315 U-JOINT ; 4 FOOTED)	1	4WD&AWD	2001+
10	46002006	12471614	PINION SEAL	1	4WD&AWD	2001+
11	74007784	9417784	SMALL PINION BEARING ASM (CUP & CONE)	1	4WD&AWD	2001+
12	74004898	3974898	COLLAPSIBLE SPACER	1	4WD&AWD	2001+
13			CARRIER ALUMINUM HOUSING (WITHOUT INTERNALS)		FOR REFERENCE ONLY	
14	40050495	19257296	OUTPUT SEAL	1	4WD&AWD	2001+
15	40030826	88967129	RING & PINION GEARSET (3:42 RATIO)	1	4WD&AWD	2001+
15	40030830	88967127	RING & PINION GEARSET (3:73 RATIO)	1	4WD&AWD	2001+
17	AVAILABLE IN KIT ONLY		PINION SHAFT LOCK SCREW	1	4WD&AWD	2001+
18	AVAILABLE IN KIT ONLY		PINION SHAFT	1	4WD&AWD	2001+
19	14039596		DIFFERENTIAL OPEN CASE (WITHOUT INTERNALS) 3.42 RATIO AND HIGHER	1	4WD&AWD	2001+
19	46002013		DIFFERENTIAL OPEN CASE ASSEMBLY (WITH INTERNALS) 3.42 RATIO AND HIGHER	1	4WD&AWD	2001+
20	74996135	14056135	SERRATED RING GEAR BOLT W/ ADHESIVE	10	4WD&AWD	2001+
21	AVAILABLE IN KIT ONLY		SIDE THRUST WASHER	2	4WD&AWD	2001+
22	AVAILABLE IN KIT ONLY		SIDE GEAR	2	4WD&AWD	2001+
23	AVAILABLE IN KIT ONLY		PINION THRUST WASHER	2	4WD&AWD	2001+
24	AVAILABLE IN KIT ONLY		PINON GEAR	2	4WD&AWD	2001+
25	74009879	9439879	LARGE PINION BEARING ASM (CUP & CONE)	1	4WD&AWD	2001+
26	46002024	12471617	OUTPUT SEAL	1	4WD&AWD	2001+
27	40016604	12479125	INTERMEDIATE SHAFT (26 TOOTH) (311 MM)	1	4WD&AWD	2001+



# Demand the original.

Axle Components | Driveshaft Components | Repair Kits

## AAM 7.25" IOP Clamshell

### 74010002 7.25" FRONT IFS - IOP - MASTER INSTALL KIT

*Trailblazer, Envoy, Rainier, Bravada*

MODEL YEAR 2002 to 2009

AAM PART #	O.E. PART #	DESCRIPTION	QTY
74996135	14056135	SERRATED RING GEAR BOLT W/ ADHESIVE	10
46002024	12471617	OUTPUT SEAL	2
74007900	517900	PINION NUT WASHER	1
46002006		PINION SEAL	1
74003326	26053326	ROLLER BEARING ASM	1
74004898	3974898	COLLAPSIBLE SPACER	1
		PINION SHIM	17
	15588383	DRAIN PLUG WASHER	1
74003326	26053326	ROLLER BEARING ASM	1
74003762	9783762	PREVAILING TORQUE PINION NUT	1
	14045736	CARRIER BOLT W/ WASHER & ADHESIVE	10

### 74067003 7.25" FRONT IFS - MASTER BEARING KIT

*S10, Sonoma, Blazer, Jimmy, Bravada, Astro, Safari*

MODEL YEAR 1983 to Current

AAM PART #	O.E. PART #	DESCRIPTION	QTY
	9417785	PINION TAIL BEARING ROLLER	1
	9439880	PINION HEAD BEARING ROLLER	1
	9413429	PINION BEARING RACE	1
	9417786	PINION BEARING RACE	1
74003762	9783762	PREVAILING TORQUE PINION NUT	1
74007900	517900	PINION NUT WASHER	1
74007898	3974898	COLLAPSIBLE SPACER	1
	26043881	DIFF BEARING ROLLER	2
	46002006	PINION SEAL	1
	26046760	DIFF BEARING RACE	2

## GM 7.25" Front Axle

### 74046137 7.25" FRONT IFS/FRONT IOP- 26 TOOTH - DIFFERENTIAL GEAR KIT

*S10, Sonoma, Blazer, Jimmy, Bravada, Safari, Astro, Savana, Express*

MODEL YEAR 1983 to Current

AAM PART #	O.E. PART #	DESCRIPTION	QTY
		SIDE GEAR	2
		PINION SHAFT	1
		SIDE THRUST WASHER	2
		PINION THRUST WASHER	2
		PINION GEAR	2
		PINION SHAFT LOCK SCREW	1

### 74020001 7.25" FRONT IFS - IOP - PINION SEAL KIT

*Trailblazer, Envoy, Rainier, Bravada*

MODEL YEAR 2002 to 2009

AAM PART #	O.E. PART #	DESCRIPTION	QTY
46002006	12471614	PINION SEAL	1
74004898	3974898	COLLAPSIBLE SPACER	1
74003762	9783762	PREVAILING TORQUE PINION NUT	1
74007900	517900	PINION NUT WASHER	1

### 74050001 7.25" FRONT IFS - IOP - OUTPUT SHAFT SEAL KIT

*Trailblazer, Envoy, Rainier, Bravada*

MODEL YEAR 2002 to 2009

AAM PART #	O.E. PART #	DESCRIPTION	QTY
46002006	12471614	PINION SEAL	1
74004898	3974898	COLLAPSIBLE SPACER	1
74003762	9783762	PREVAILING TORQUE PINION NUT	1
74007900	517900	PINION NUT WASHER	1



**74080001 7.25" FRONT GM - AWD IOP  
DISCONNECT SHIFTER KIT**

*Trailblazer, Envoy, Rainier, Bravada*

**MODEL YEAR 2002 to 2009**

AAM PART #	O.E. PART #	DESCRIPTION	QTY
14056165		TUBE BOLT W/ WASHER	4
26053326		ROLLER BEARING ASM	3
40007449		DISCONNECT WASHER	1
40024349		DISCONNECT SEAL	1
40038875	15801507	OUTPUT SEAL	1
46002026		PROTECTOR SHIPPING CAP RH	0
46002035		PROTECTOR CAP	0
46003010		THRUST WASHER	1
46003020		PLUG AWD	1
46003103		LH DISCONNECT HOUSING	1
46004099		COUPLER SHAFT	1
46004107		DISCONNECT HOUSING RH - MACH AWD	1

**74080002 7.25" FRONT IFS- 4WD IOP -  
DISCONNECT SHIFTER KIT**

*Trailblazer, Envoy, Bravada, Rainier*

**MODEL YEAR 2002 to 2009**

AAM PART #	O.E. PART #	DESCRIPTION	QTY
40024349	12479302	DISCONNECT SEAL	1
74003326	26053326	ROLLER BEARING ASM	3
46004105	12479081	RH DISCONNECT HOUSING	1
		WASHER	3
40038875	15801507	OUTPUT SEAL	1
	14056165	TUBE BOLT W/ WASHER	4
	11513762	ACTUATOR BOLT	2
40017109		SHIFTER FORK	1
46003009		RETURN SPRING	1
	26036092	SHIFTER SLEEVE	1
46003022	12471631	ACTUATOR	1
46003014		CONNECTOR GEAR	1
46003015	26047584	CONNECTOR GEAR	1
46003103	12471633	LH DISCONNECT HOUSING	1